

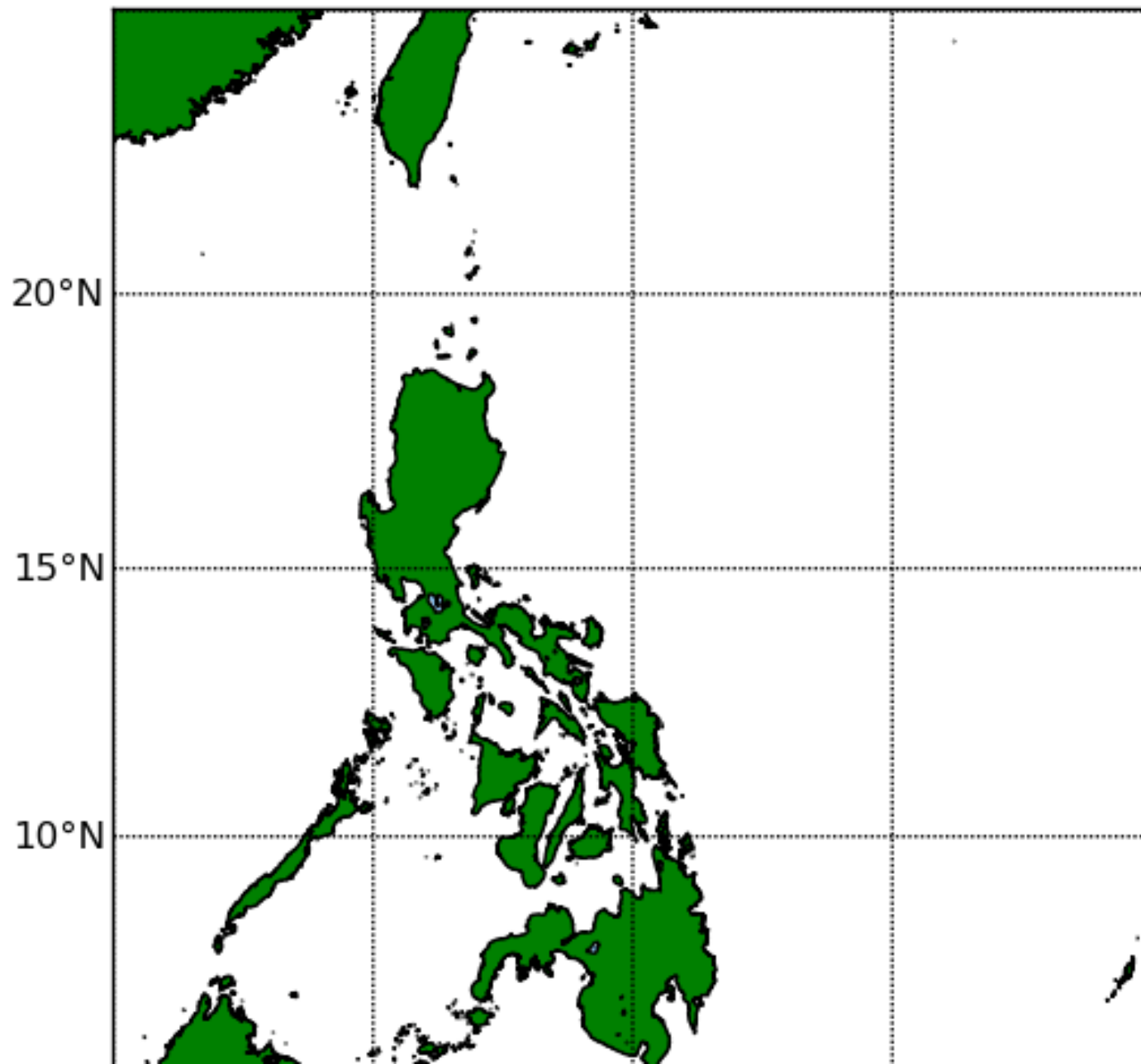
# Philippine Disasters

A.M.F. Lagmay

# Reasons for Studying Philippines Disasters

- The Philippines is an archipelago with an area of 300,000 sq.km and a coastline of 17,460 kilometers
- Its location makes it a prime target for extreme weather events such as typhoons, as well as a recipient of the climatological effects of El Nino and La Nina and the southwest monsoons.
- The Philippines is situated along the “ Pacific Ring of Fire”.

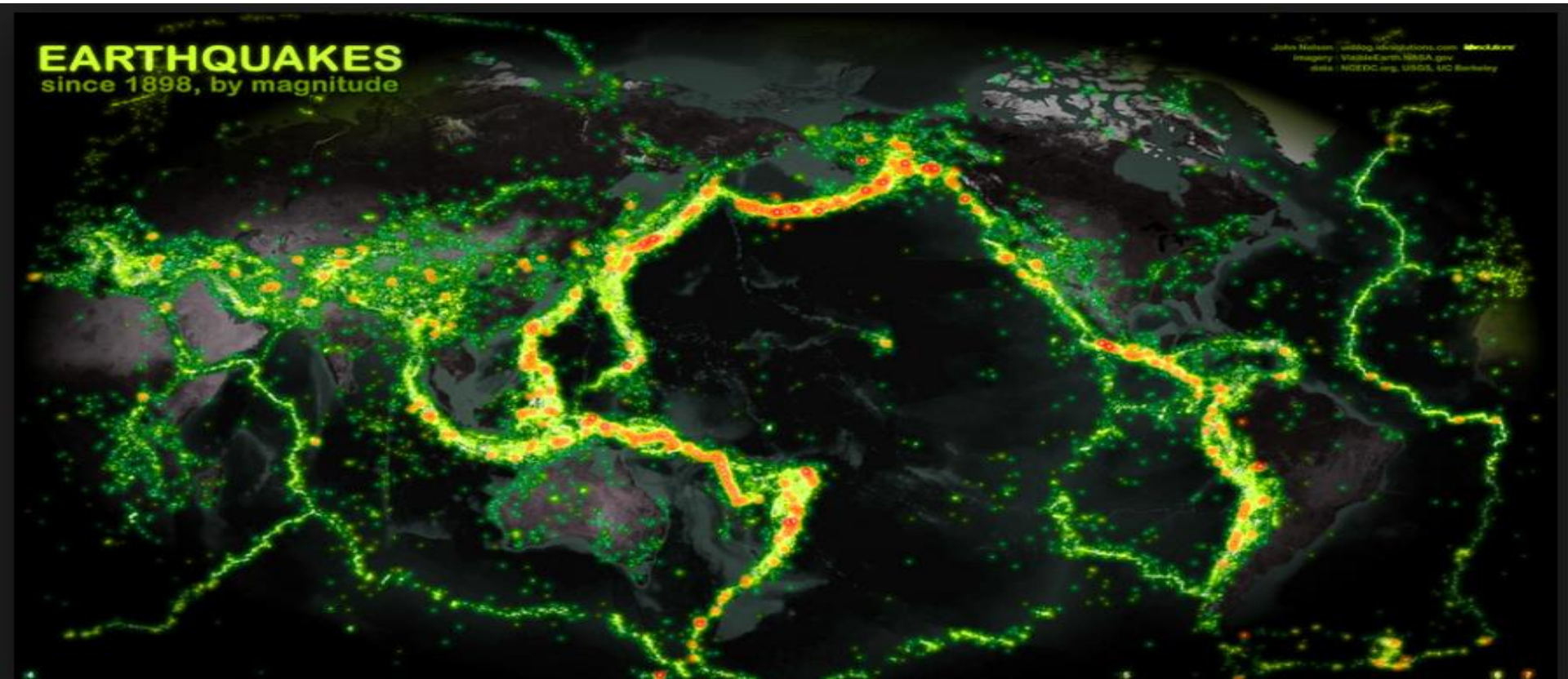
1951



# EARTHQUAKES

since 1898, by magnitude

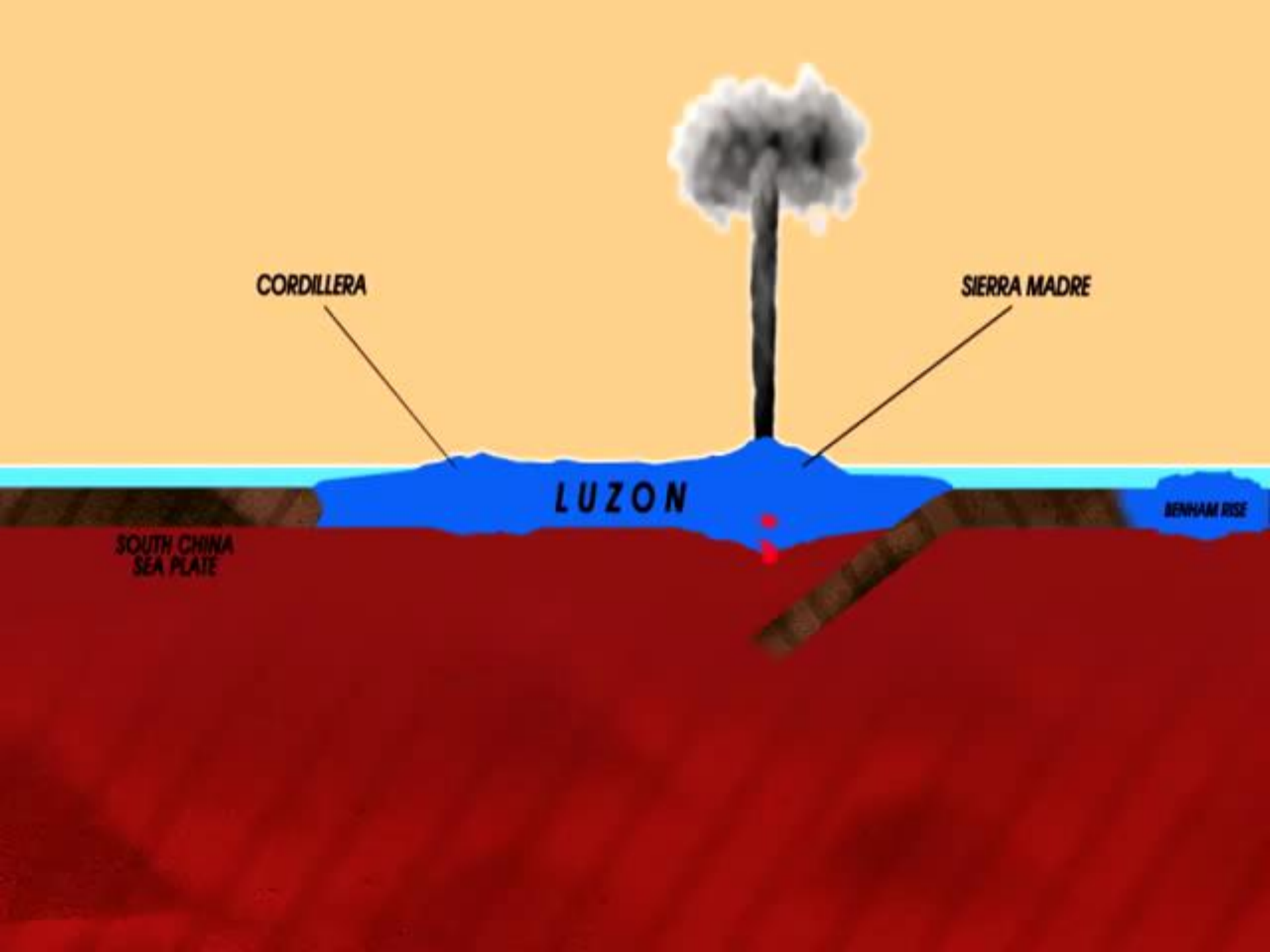
John Nelson | [blog.identifications.com](http://blog.identifications.com) | [flickr.com/photos/identifications/](https://www.flickr.com/photos/identifications/)  
Imagery: [VisibleEarth.NASA.gov](http://VisibleEarth.NASA.gov)  
Data: [NOEDC.org](http://NOEDC.org), USGS, UC Berkeley



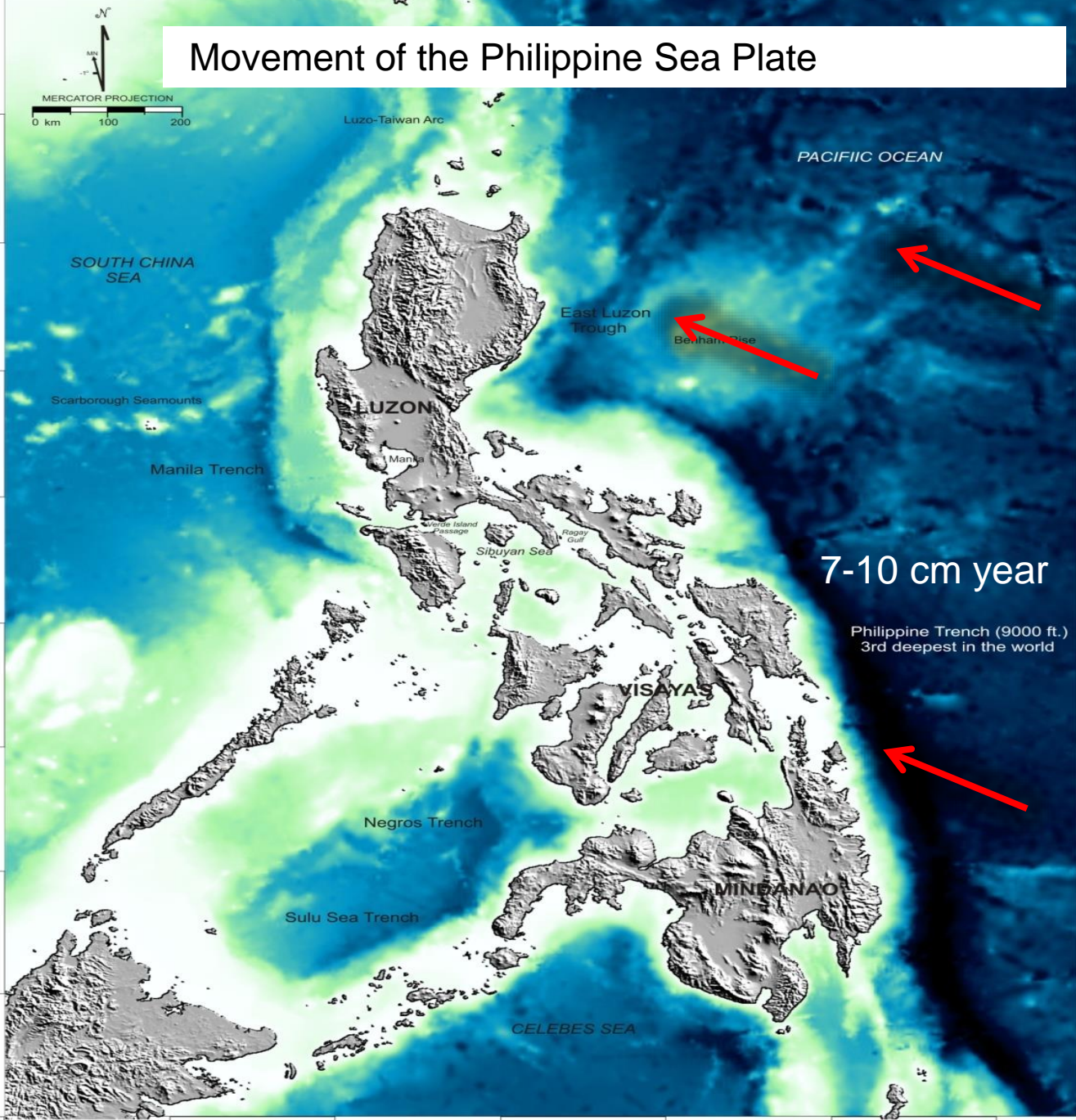


**35 Ma**



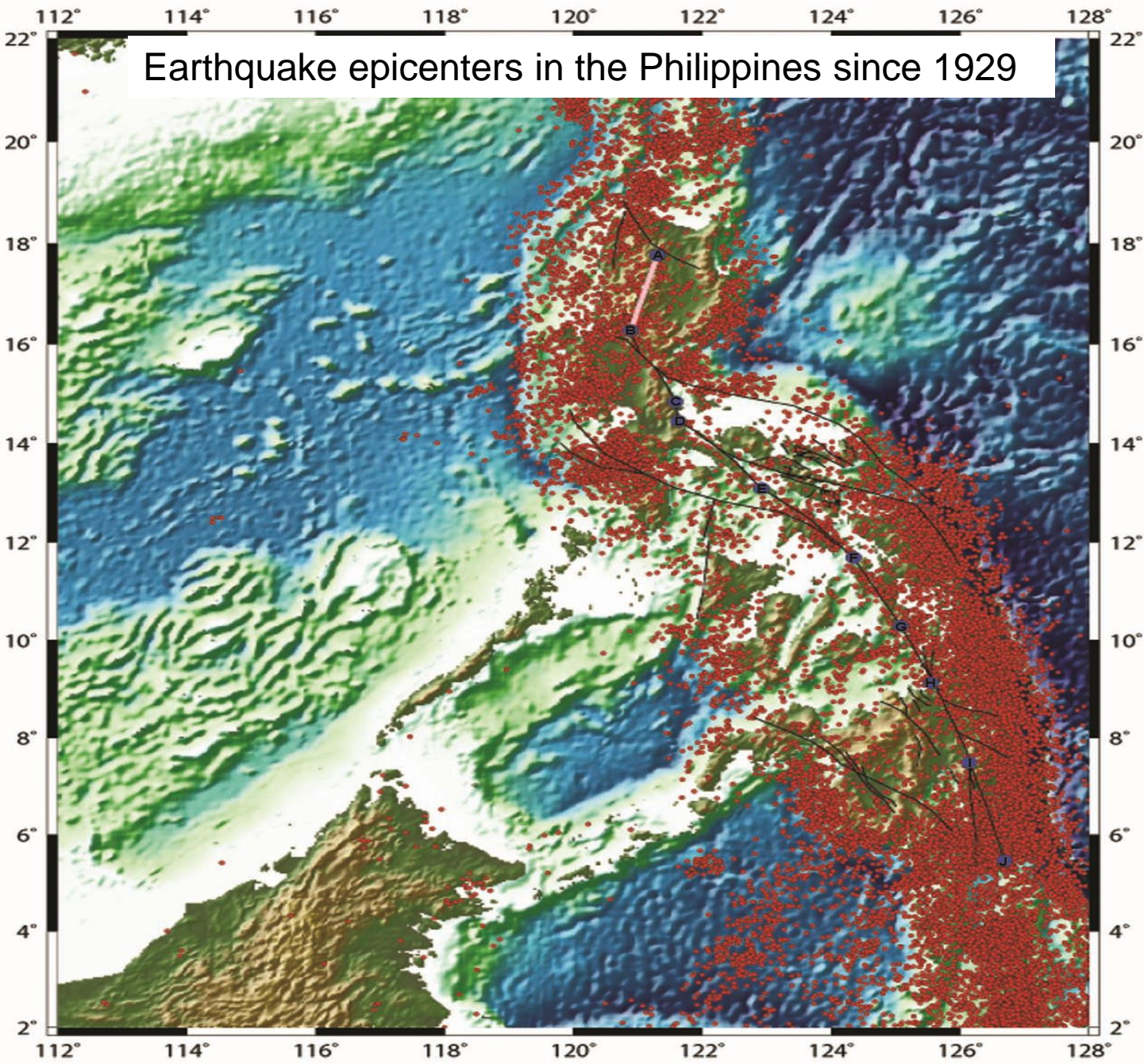


# Movement of the Philippine Sea Plate



end:





## The 15 most exposed countries worldwide

country	Exp. (%)	Rank
Vanuatu	63.66	1.
Tonga	55.27	2.
Philippines	52.46	3.
Japan	45.91	4.
Costa Rica	42.61	5.
Brunei Darussalam	41.10	6.
Mauritius	37.35	7.
Guatemala	36.30	8.
El Salvador	32.60	9.
Bangladesh	31.70	10.
Chile	30.95	11.
Netherlands	30.57	12.
Solomon Islands	29.98	13.
Fiji	27.71	14.
Cambodia	27.65	15.

## The 15 countries that are most at risk worldwide

country	Risk (%)	Rank
Vanuatu	36.28	1.
Tonga	29.33	2.
Philippines	26.70	3.
Guatemala	19.88	4.
Bangladesh	19.17	5.
Solomon Islands	19.14	6.
Brunei Darussalam	17.00	7.
Costa Rica	17.00	8.
Cambodia	16.58	9.
Papua New Guinea	16.43	10.
El Salvador	16.05	11.
Timor-Leste	15.69	12.
Mauritius	15.53	13.
Nicaragua	14.62	14.
Guinea-Bissau	13.56	15.

Frank Schuengel for wheninmanila.com



# Exposure to natural hazards

1. Pyroclastic flow
2. Pyroclastic fall
3. Debris Avalanche
4. Lahar
5. Lava
6. Tsunami (volcano-generated)
7. Noxious gas
8. Fire
9. Landslides
10. Ground subsidence
11. Liquefaction
12. Ground rupture
13. Collapse of structures
14. Earthquake-generated Tsunami
15. Floods



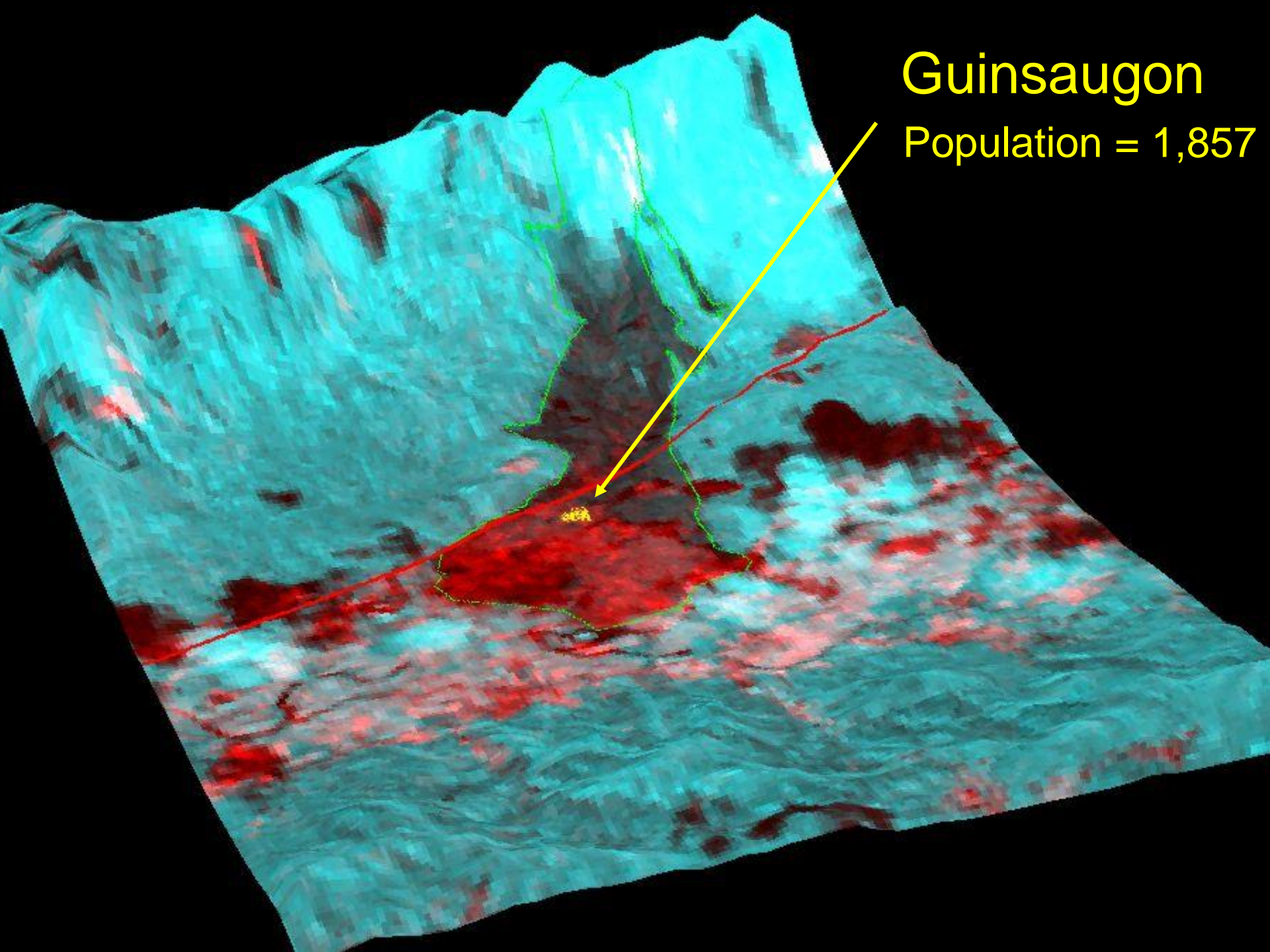
# Some Major Disasters in the Philippines (cost)

- Nov. 2004 Typhoon Winnie 1619 dead US\$ 78.2 million
- Dec 2005 Typhoon Quedon Mindoro Flooding US\$ 0.5 million
- Feb. 17, 2006 Guinsaigon landslide 1126 dead US\$ 2.203 million
- Nov. 30, 2006 Typhoon Reming 1399 dead US\$ 66.4 million
- June 20, 2008 Typhoon Frank 644 dead US\$ 135 million
- February 26, 2009 Ondoy Flood 400\* dead
- Pedring and Quiel Flood 2011
- Sendong Floods 2011
- Pablo Debris Flows 2012
- Yolanda Storm Surges 2013









Guinsaugon

Population = 1,857

# Landslide Statistics

- Area: ~ 3,324,000 m<sup>2</sup>
- Distance: ~ 4.0 km from crown to toe; 1.5 km max width
- Thickness: 6 to 7 m at the toe and 30 m at the base of the fault scar
- Volume of the deposit: 15 to 20 million m<sup>3</sup>.
- Flow velocity: ~ 100-120 km/hour



A person wearing an orange long-sleeved shirt, a matching orange cap, and dark shorts is standing on a beach. They are looking down at a piece of white corrugated metal or debris on the ground. The background shows a sandy beach with scattered debris and a body of water in the distance.

**Fatalities=1226**

**Missing (dead) = 980**

**Bodies recovered= 139**

**Identified = 56**

**Unidentified = 83**

**Treated for injuries = 33**

**Died in the hospital = 2**





Day 6, Wed, 22 Feb 2006





Day 7, Thurs, 23 Feb 2006





Day 7, Thurs, 23 Feb 2006



STORE  
Katherine Lee - Proprietress  
SAN JUAN, SOUTHERN LEYTE  
FEBRUARY 2006  
SUN MON TUE WED THU FRI SAT  
1 2 3 4  
5 6 7 8 9 10 11  
12 13 14 15 16 17 18  
19 20 21 22 23 24 25  
26 27 28 ●

Day 7, Thurs, 23 Feb 2006

RESCUE 505



# Search and Rescue Operation 24 February 2006 Target Sites



Prepared by the  
UP-Ateneo Team









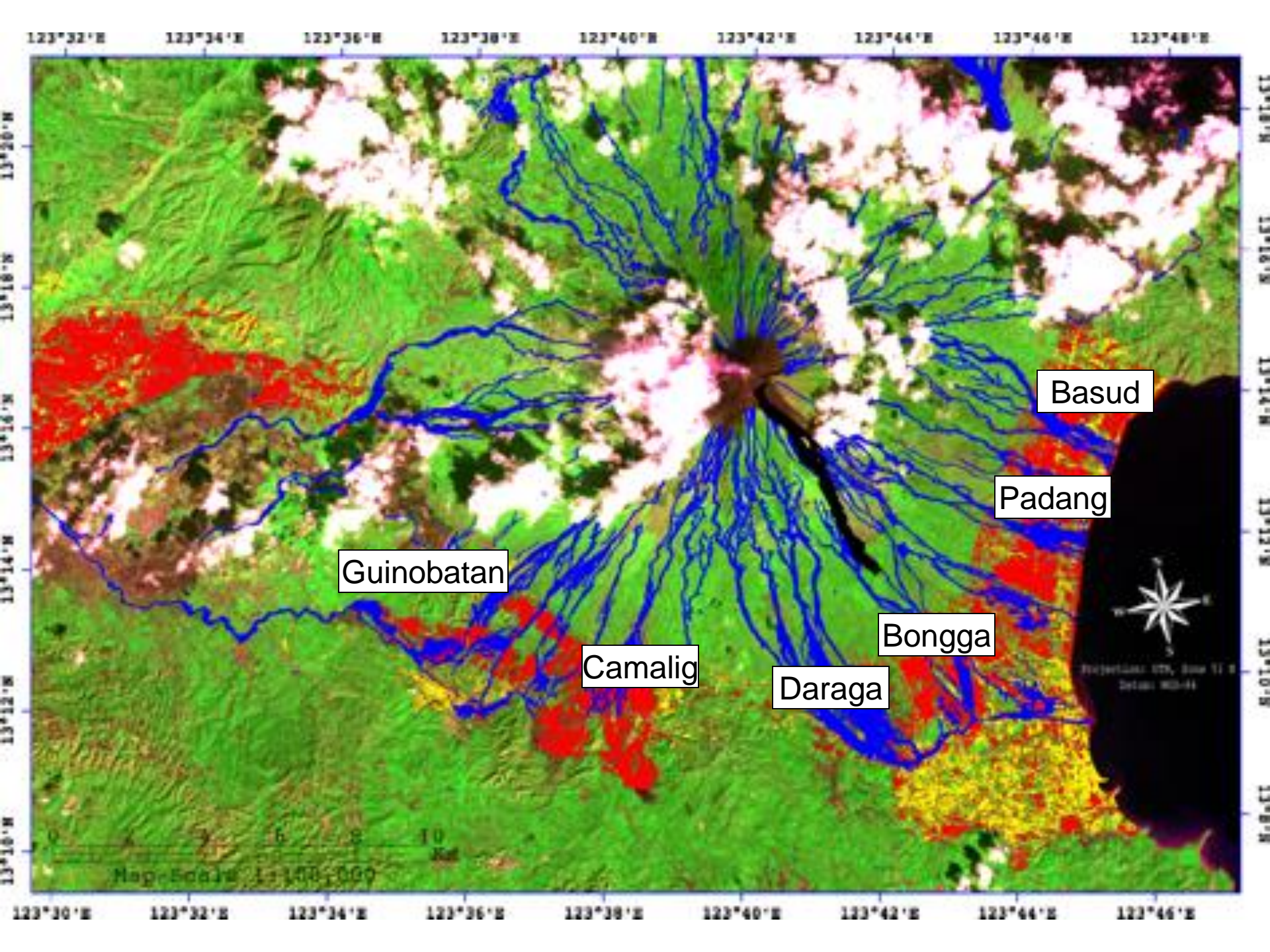












Basud

Padang

Guinobatan

Bongga

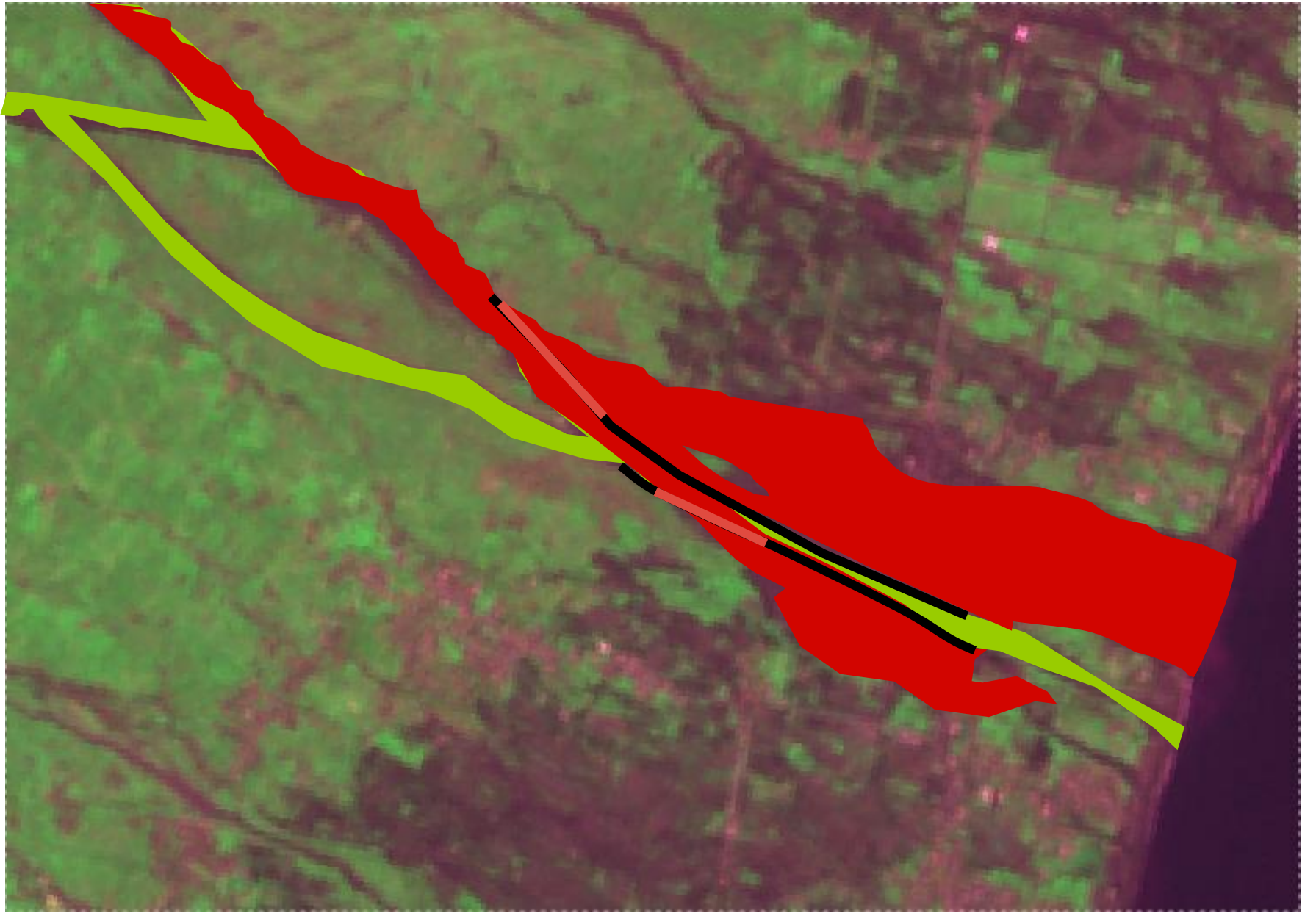
Camalig

Daraga

Map Scale: 1:100,000

Projection: UTM, Zone 11 E  
Datum: WGS-84





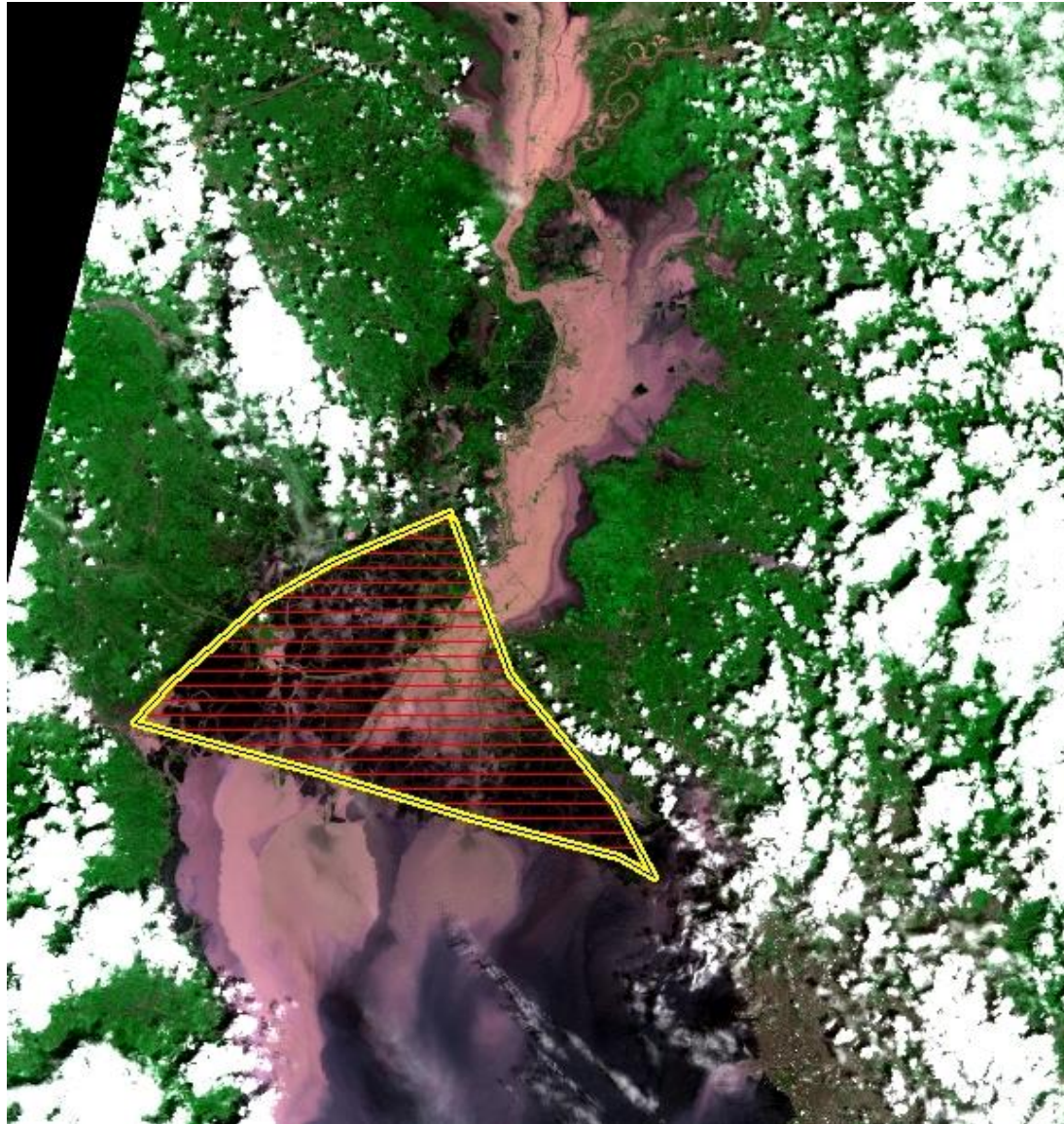


June 20, 2008 Typhoon Fenshen 644 dead US\$ 135 million  
Credit goes to the photographer – from AFP archive



# Pampanga River Delta

471,725,090 sq. meters













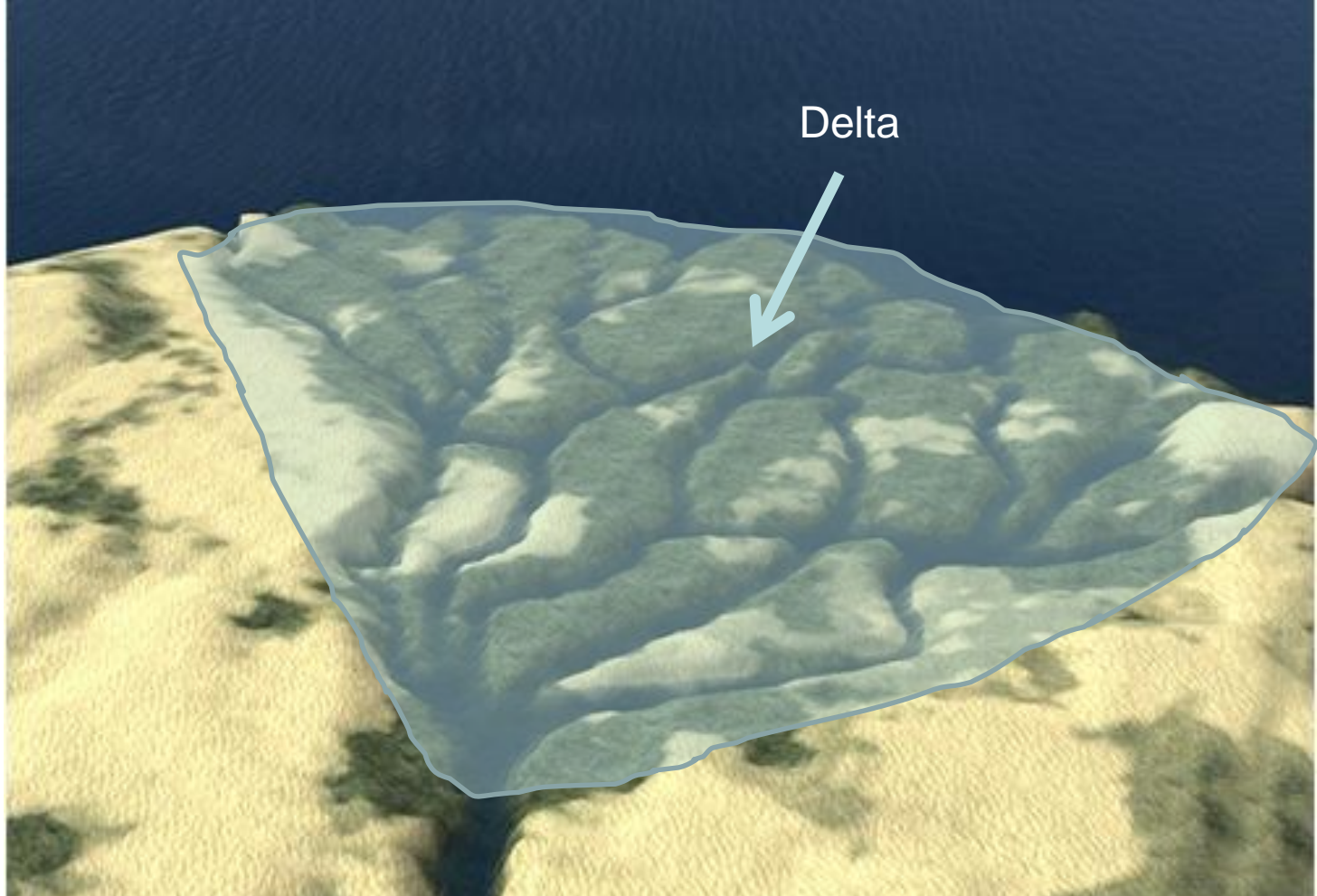






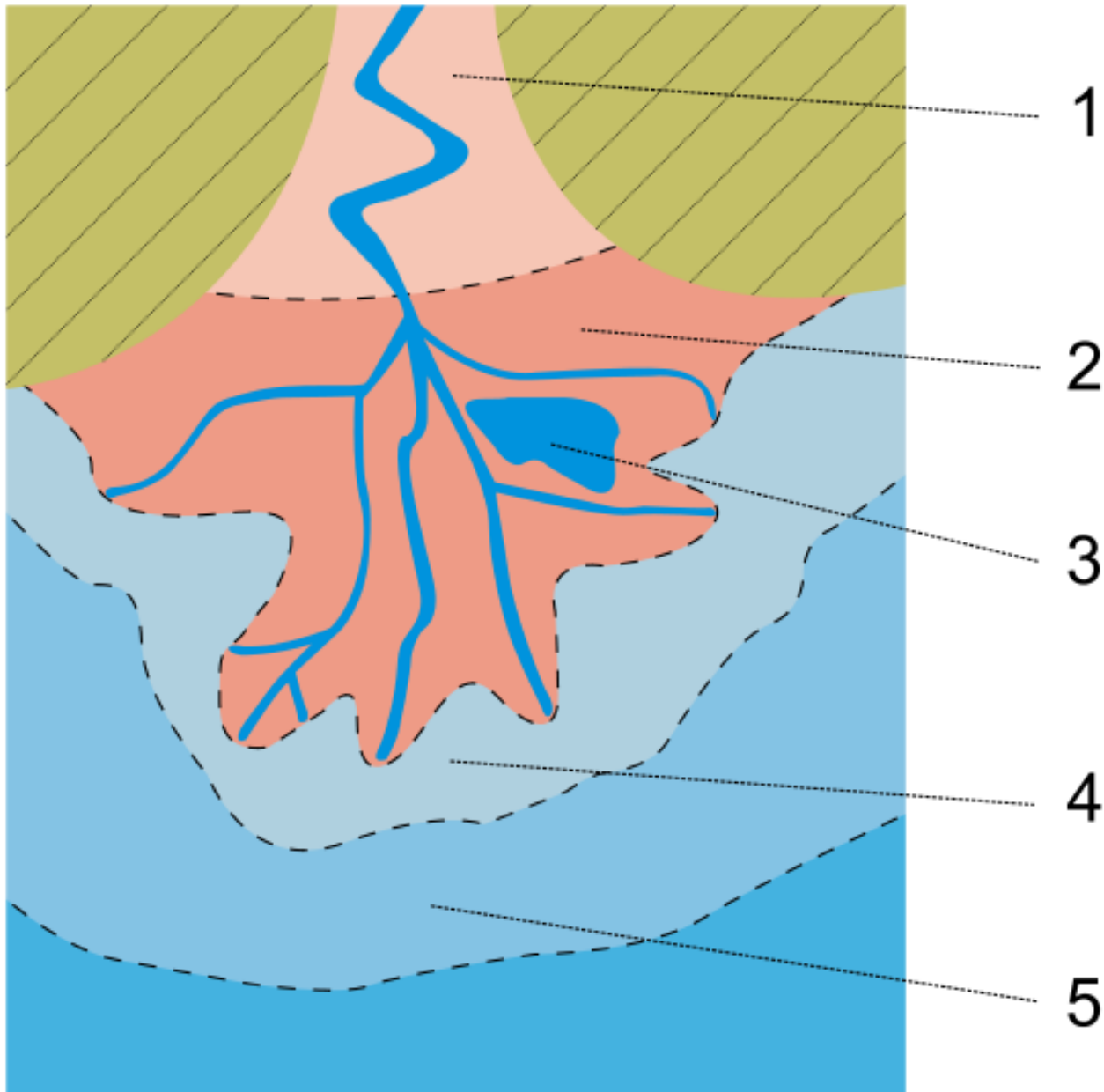






A **delta** is a landform that is formed at the mouth of a river where that river flows into an ocean, sea, estuary, lake, reservoir, flat arid area, or another river. Deltas are formed from the deposition of the sediment carried by the river as the flow leaves the mouth of the river. Over long periods of time, this deposition builds the characteristic geographic pattern of a **river delta**.

<http://www.flickr.com/photos/avatrian/2279411722/lightbox/>



Deltas are characterized by a network of river channels that brings water into the sea.





The river delta in Pampanga/Bulacan used to be a network of river channels called distributaries. During flood events the entire delta, including its rivers and flood plains would act as a drainage system (orange color in this map).







Lagmay 2010



Floods did not use the entire delta because of the dikes and was further clogged by fishponds preventing water to drain efficiently into Manila Bay

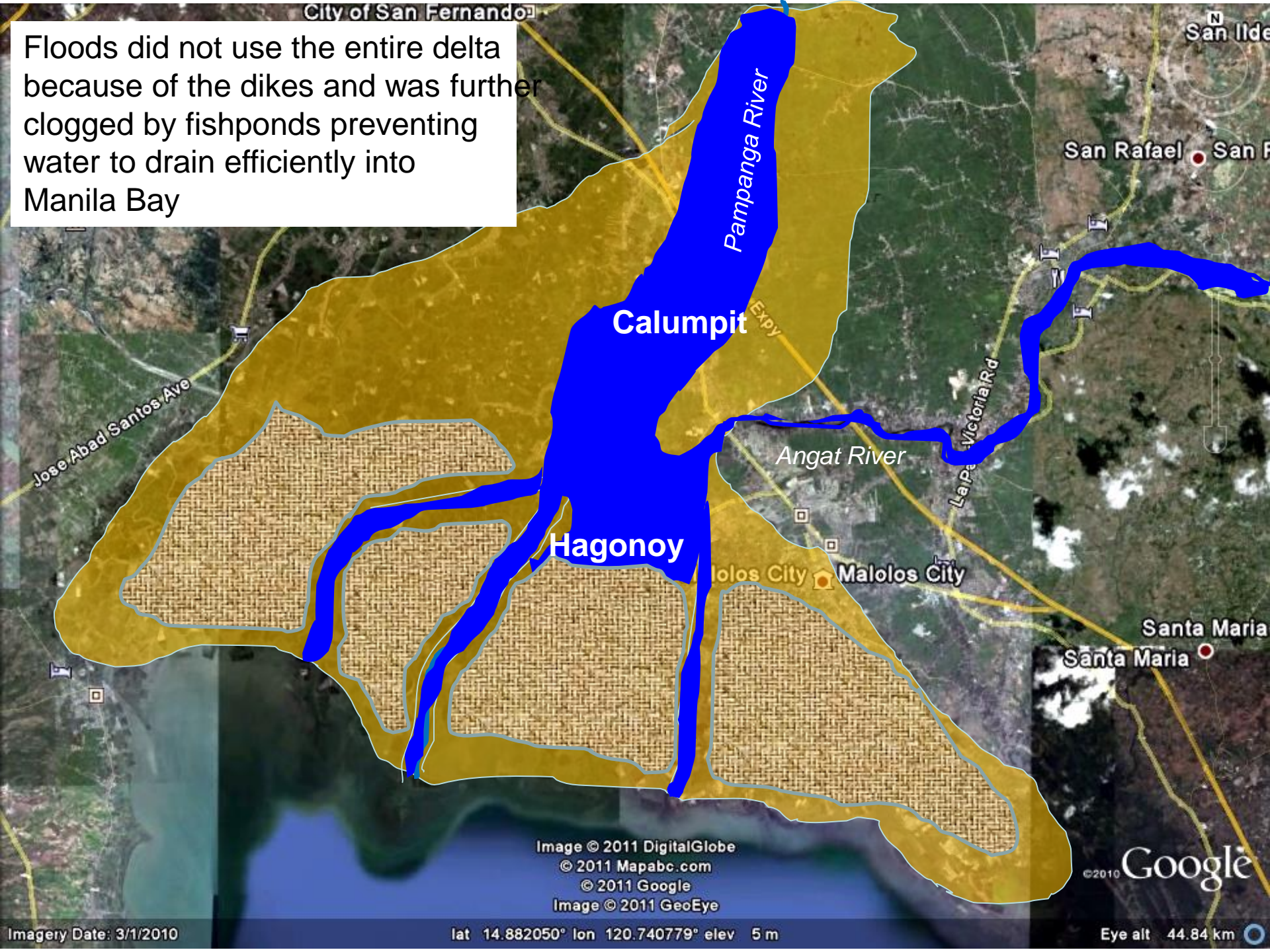


Image © 2011 DigitalGlobe  
© 2011 Mapabc.com  
© 2011 Google  
Image © 2011 GeoEye

©2010 Google

Imagery Date: 3/1/2010

lat 14.882050° lon 120.740779° elev 5 m

Eye alt 44.84 km



# Sendong disaster Iligan



UP NIGS team



Mandulog River



Orchids Home Subidivision, Santiago, Iligan



<http://www.firmbuilders.com.ph/>



Orchids Home Subidivision, Santiago, Iligan



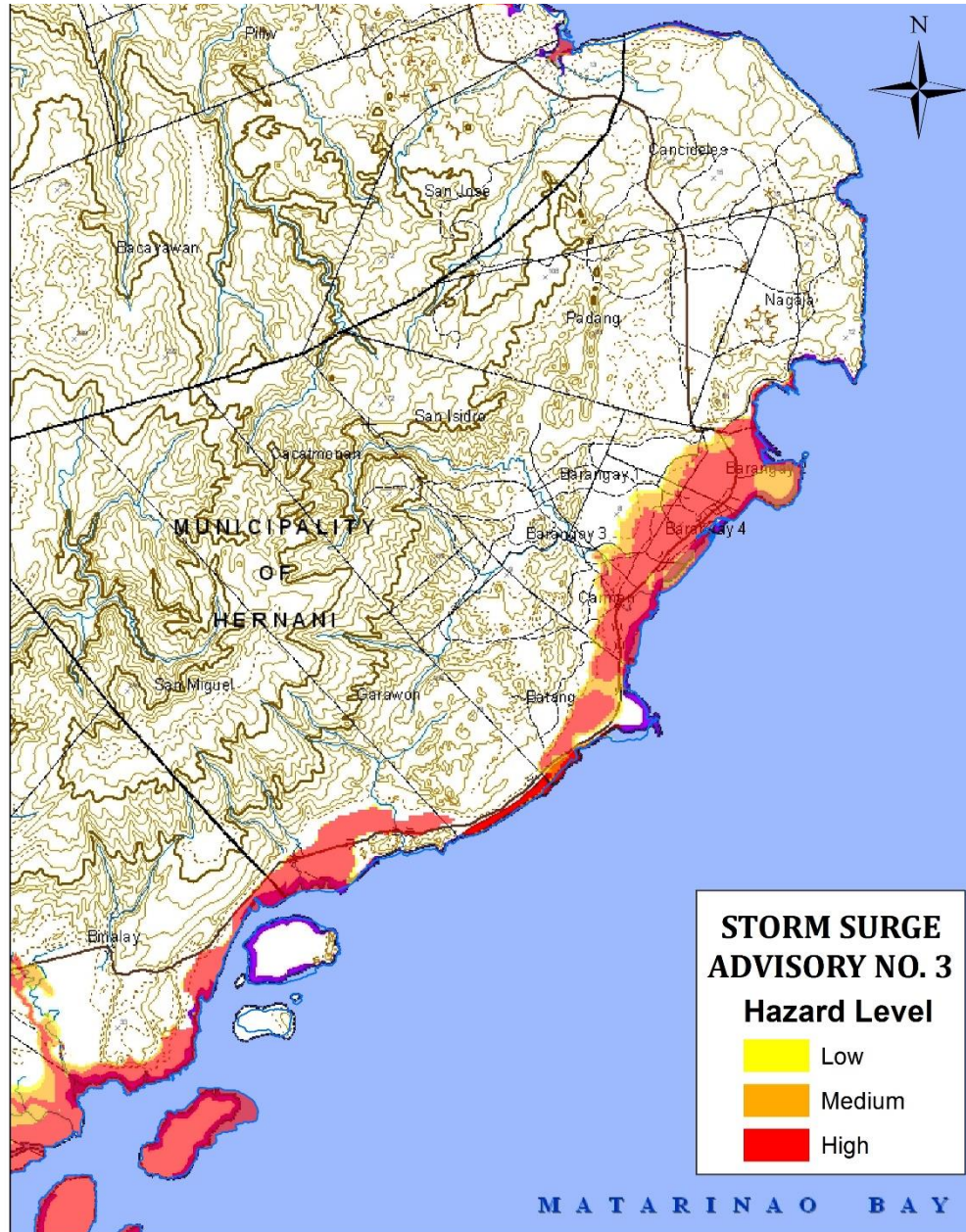


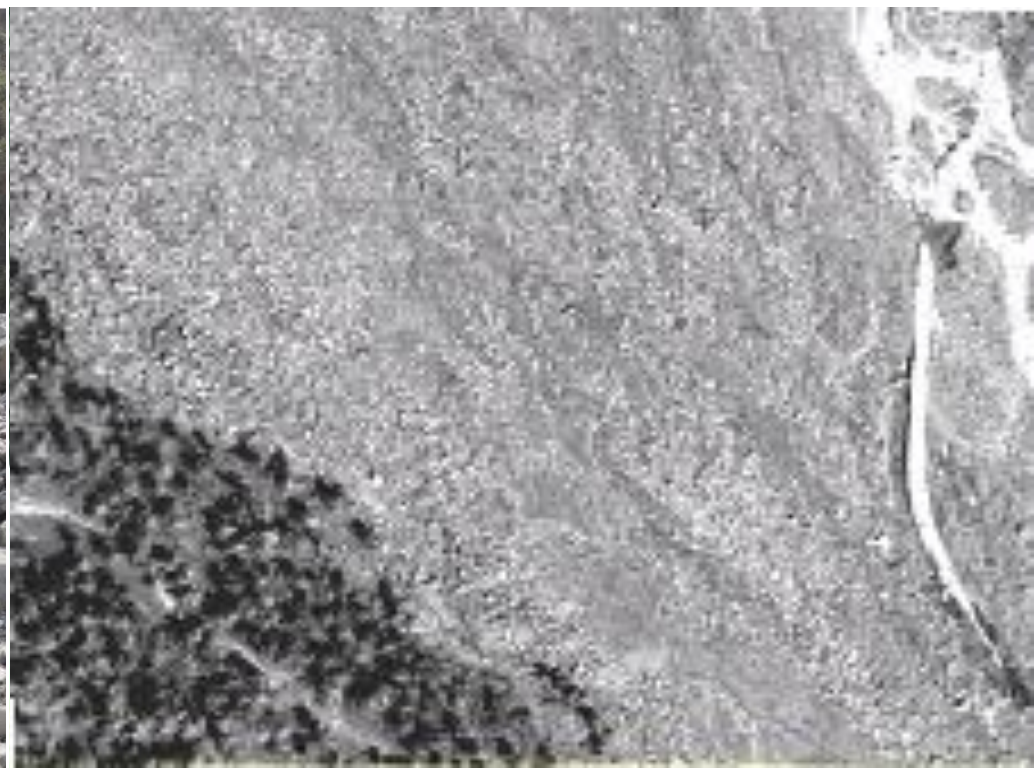












566 people were placed in an evacuation center overwhelmed by debris flows (This picture) which is a type of landslide



# AVOIDING DISASTERS



**WARN**

**RESPOND**



**NO AMOUNT OF ACCURATE  
WARNING WILL WORK IF  
RESPONSE IS INAPPROPRIATE**

# Tweets



**mario** @ohohmario

3h

Good after noon po

[Collapse](#) [Reply](#) [Retweet](#) [Favorite](#) [More](#)

**680**  
RETWEETS

**680**  
FAVORITES



5:43 PM - 6 Dec 12 · Details

Reply to @ohohmario



**Anica Bianca Ordan** @anicaordan

3h

@ohohmario Good afternoooooon Mario Baby! I love youu! <3

[Expand](#)



**mika** @inspiritmika

3h

@ohohmario hi

[Expand](#)



★ **TWINKLE** ★ @superstaaarr

3h

@ohohmario Hi Mario! Chan Rak Khun! :) ♡

[Expand](#)





**Mahar Lagmay** @nababaha · Dec 25

Latest weather satellite image and forecast track of #NinaPH according to PAGASA. Stay safe everyone!



1 5 1



**PINOY BAE** @PINOYBAE · 26 Dec 2016

It's raining men. Kevin Redder 🌧️ #NinaPH



👤 5

🔄 277

❤️ 783







**GMA News** @gmanews

22 Aug

"Ang love parang **bagyo**, 'yan eh. Mahirap i-predict kahit may PAGASA." - Anonymous | via [@nababaha](#)

Retweeted by Camille Bawan

Collapse

Reply Retweet Favorite More

**1,123**  
RETWEETS

**578**  
FAVORITES



2:39 PM - 22 Aug 13 - Details

Reply to [@gmanews](#) [@alassea027](#)



**charlene opada** @charleneopada

24 Aug

"[@gmanews](#): "Ang love parang bagyo, 'yan eh. Mahirap i-predict kahit may PAGASA." - Anonymous | via [@nababaha](#)"

Expand

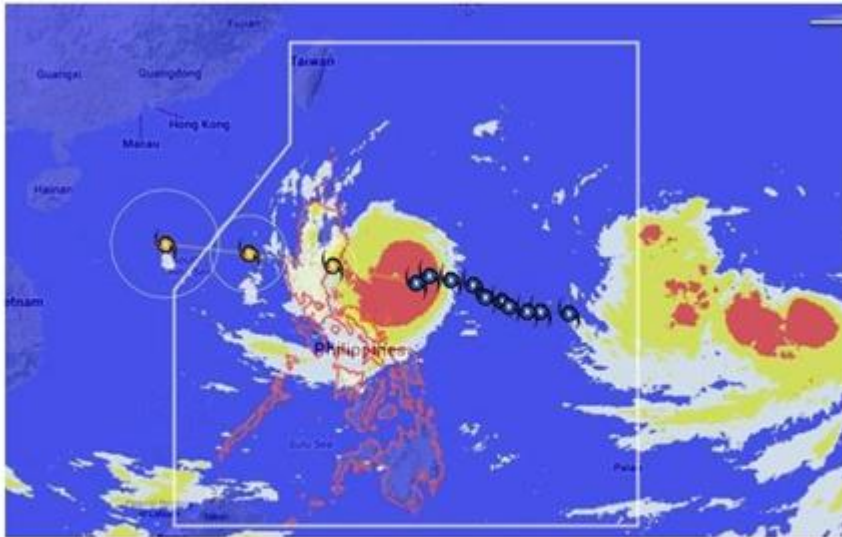


**Mahar Lagmay**

@nababaha

Forecast track & satellite image of typhoon #SantiPH . Paki share din po ito sa inyong mga kaibigan at mga kababayan [pic.twitter.com/75VuzARmtb](http://pic.twitter.com/75VuzARmtb)

10/11/13, 8:06 AM



29 RETWEETS 2 FAVORITES

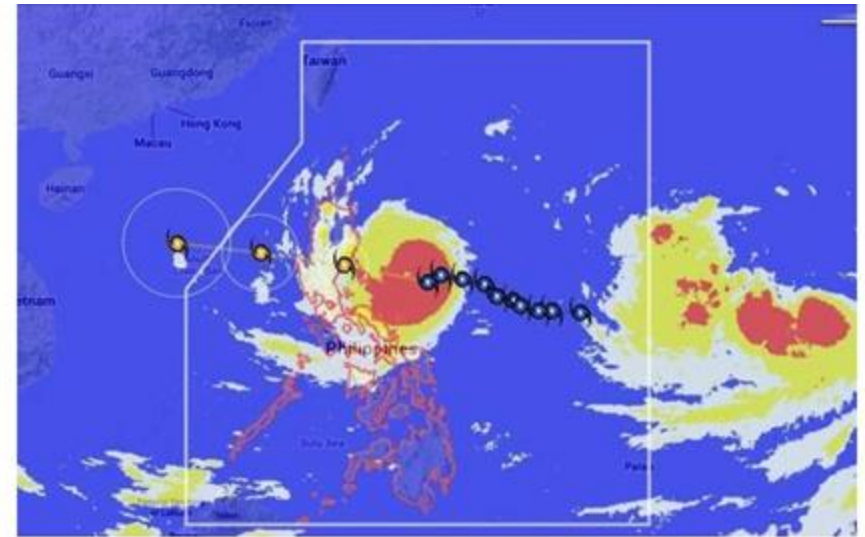


**Mahar Lagmay**

@nababaha

Forecast track & satellite image of typhoon #SantiPH. Ang mag-retweet nito ay gaganda ang love life. [pic.twitter.com/VEqIvZrJsm](http://pic.twitter.com/VEqIvZrJsm)

10/11/13, 8:21 AM



90 RETWEETS 12 FAVORITES











## PHOTO

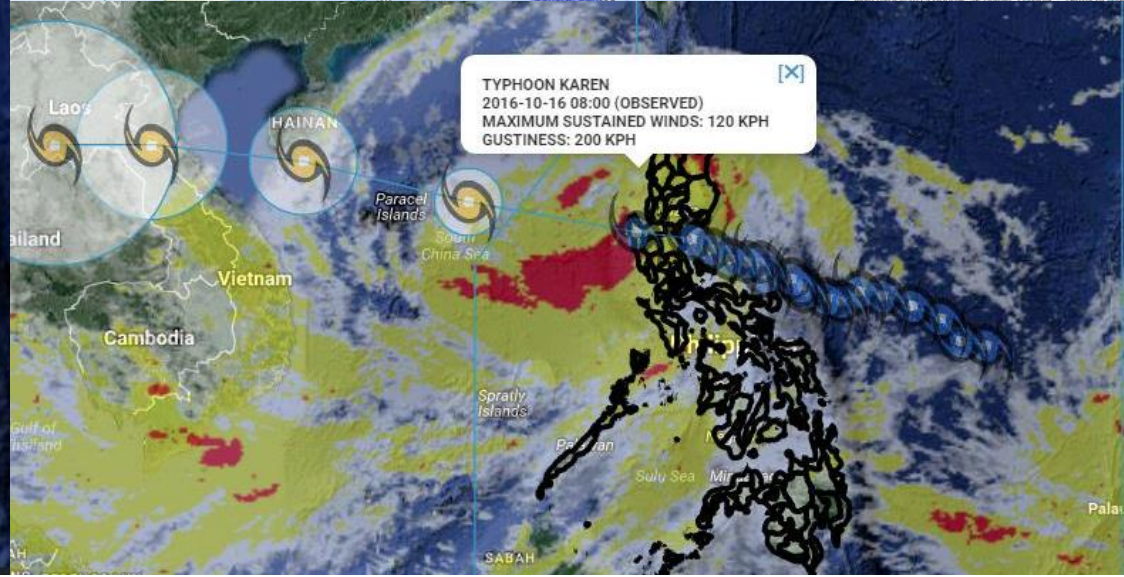
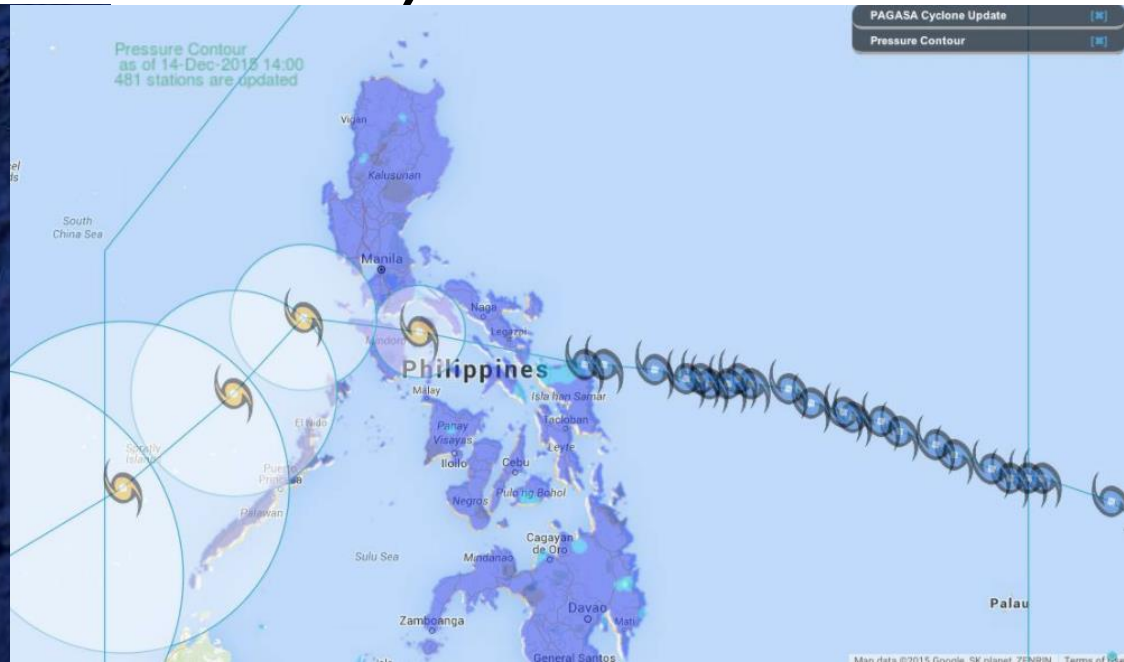
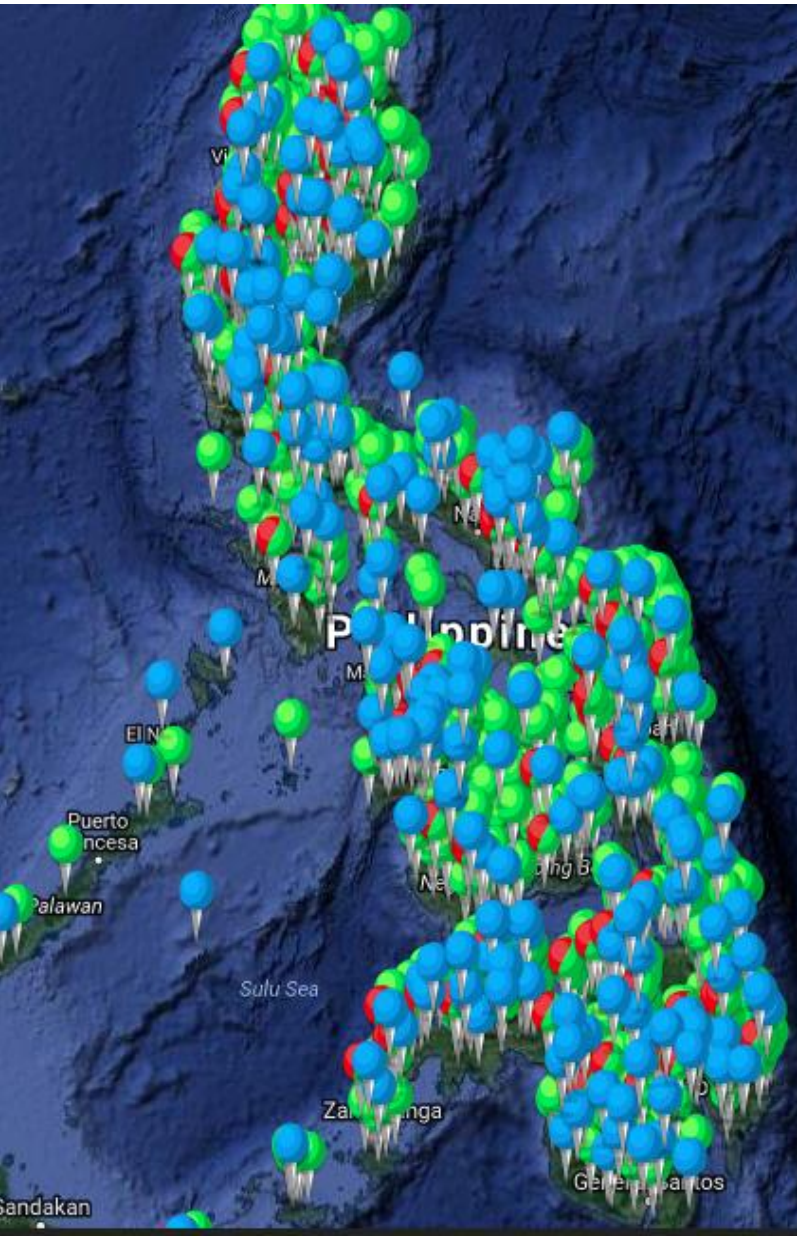


♥ 14013 likes

🗨 [annecurtissmith](#) The day [@kuyakim\\_atienza](#) and myself met with Prof. Mahar Lagmay [@nababaha](#) 😊 Happy to be on board PROJECT NOAH. Want to know more about



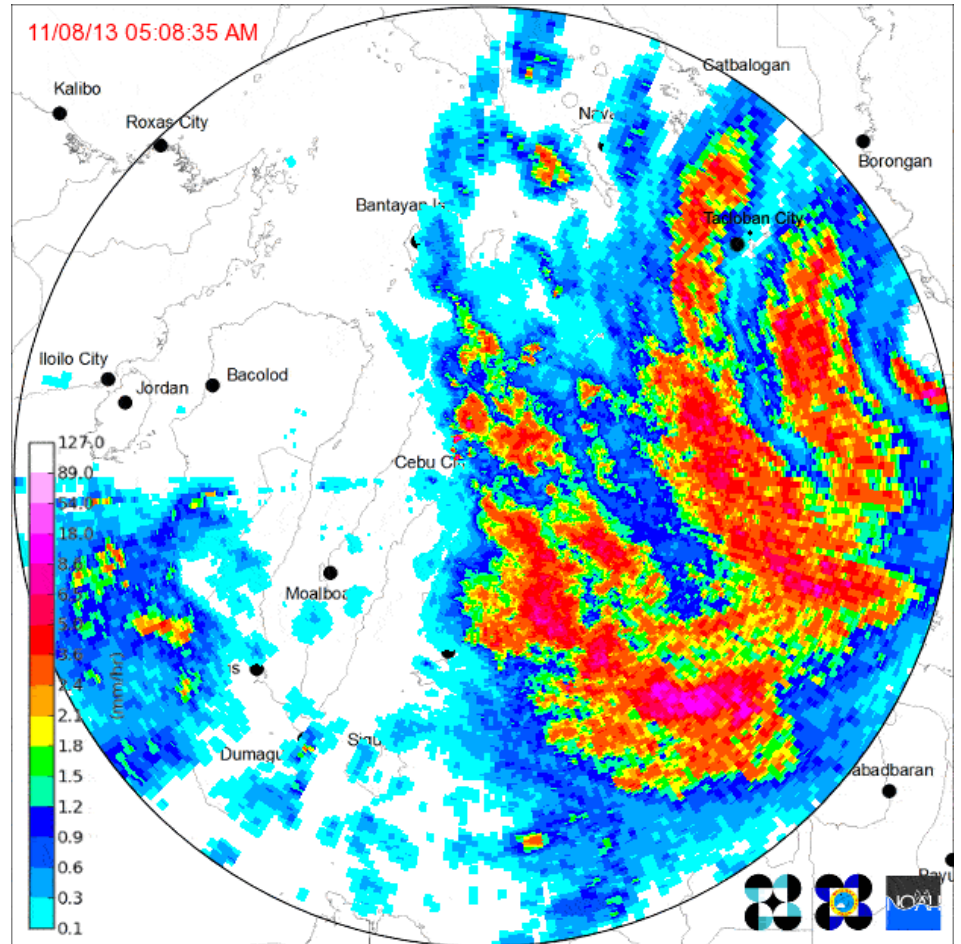
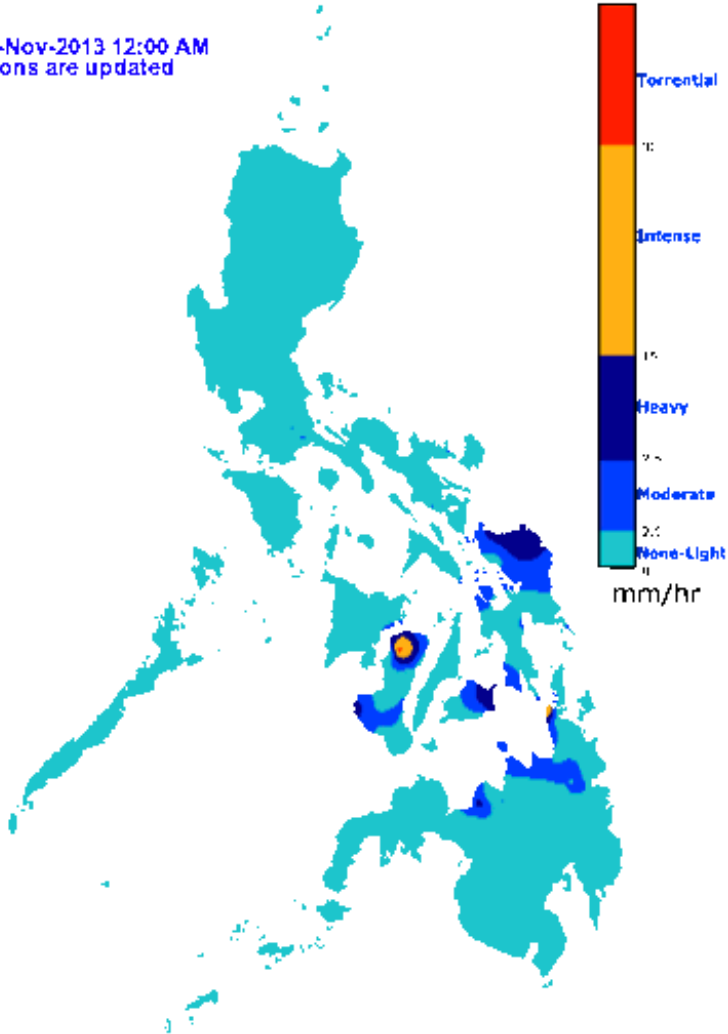
# Near-real time data (openly accessible)

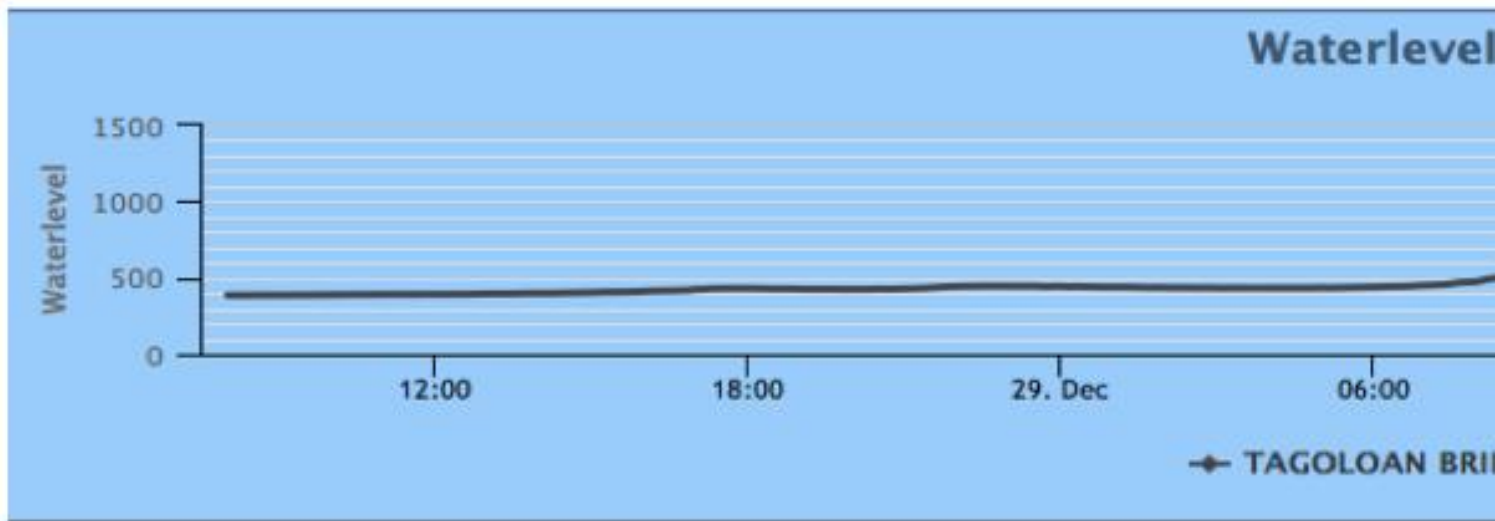




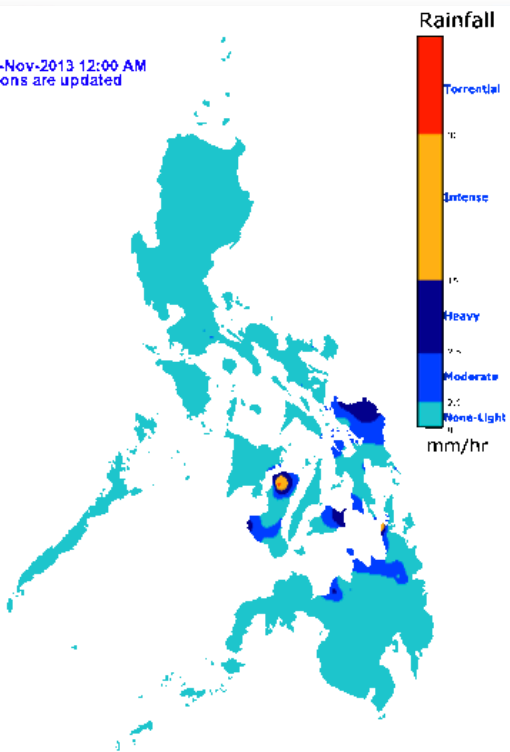
# Near-real time data (openly accessible)

As of 08-Nov-2013 12:00 AM  
322 stations are updated





As of 08-Nov-2013 12:00 AM  
322 stations are updated



Tagoloan Bridge, Tagoloan, Bukidnon



5:03pm - 29 Dec 2014 - iOS

4 RETWEETS 2 FAVORITES

Globe 11:39 AM

← Recents Info

### Eric Tagoloan

---

December 29, 2014

12:14 PM	Outgoing Call	1
12:13 PM	Canceled	
12:12 PM	Canceled	

---

mobile  
(0906) 326 3215

---

FaceTime

---

Notes





Edit

minute

**Peak flood  
 6:10 pm  
 29 Dec.  
 2014**



**Cagayan de Oro City** shared Kagay Whitewater Rafting's post.  
 December 30, 2014 at 12:42am · 🌐

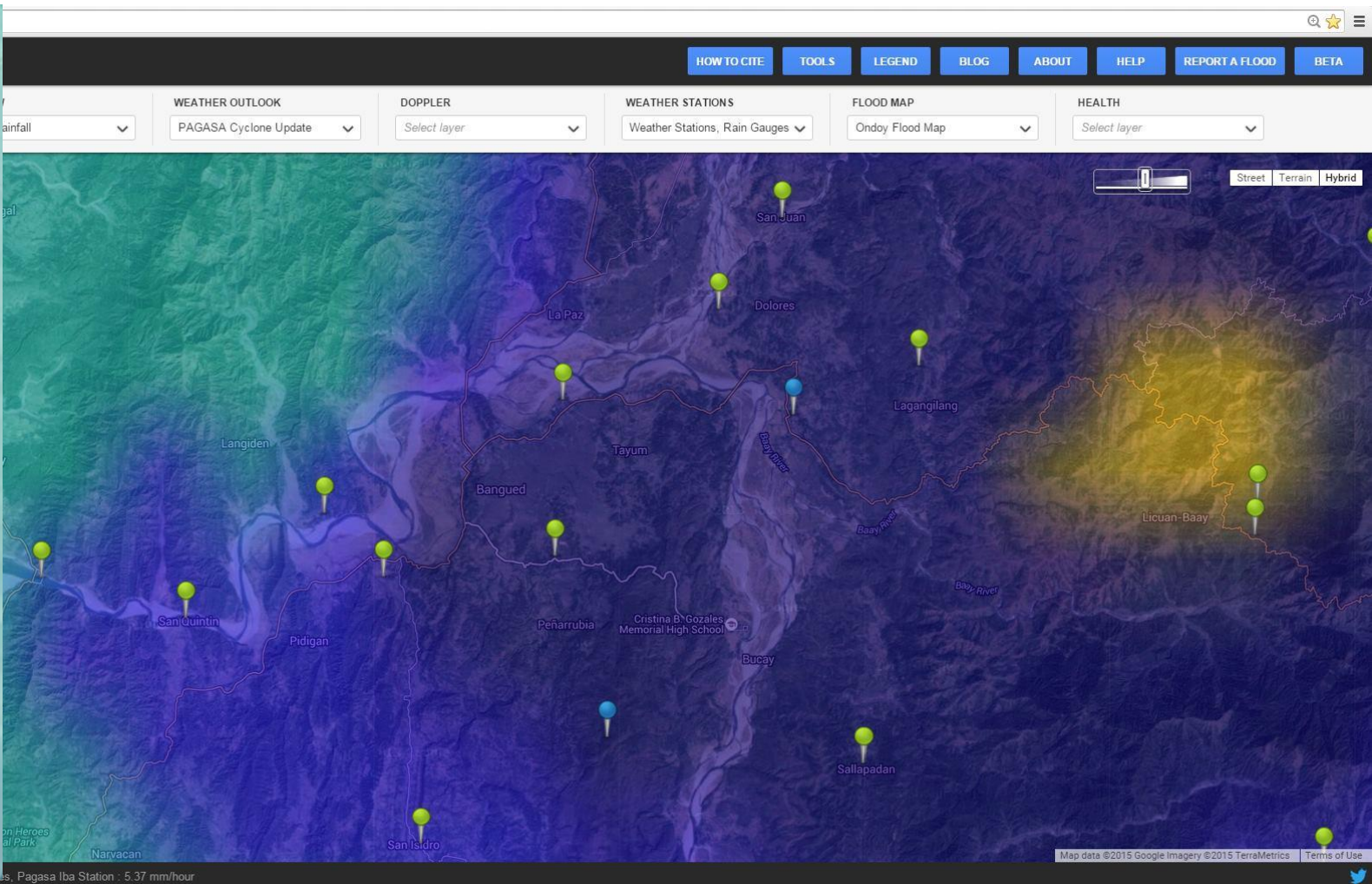


**Kagay Whitewater Rafting** added 5 new photos — with Yaj Ydnar Bulletz and others.

Earlier This afternoon at Brgy. Natumolan, Tagoloan Misamis Oriental.

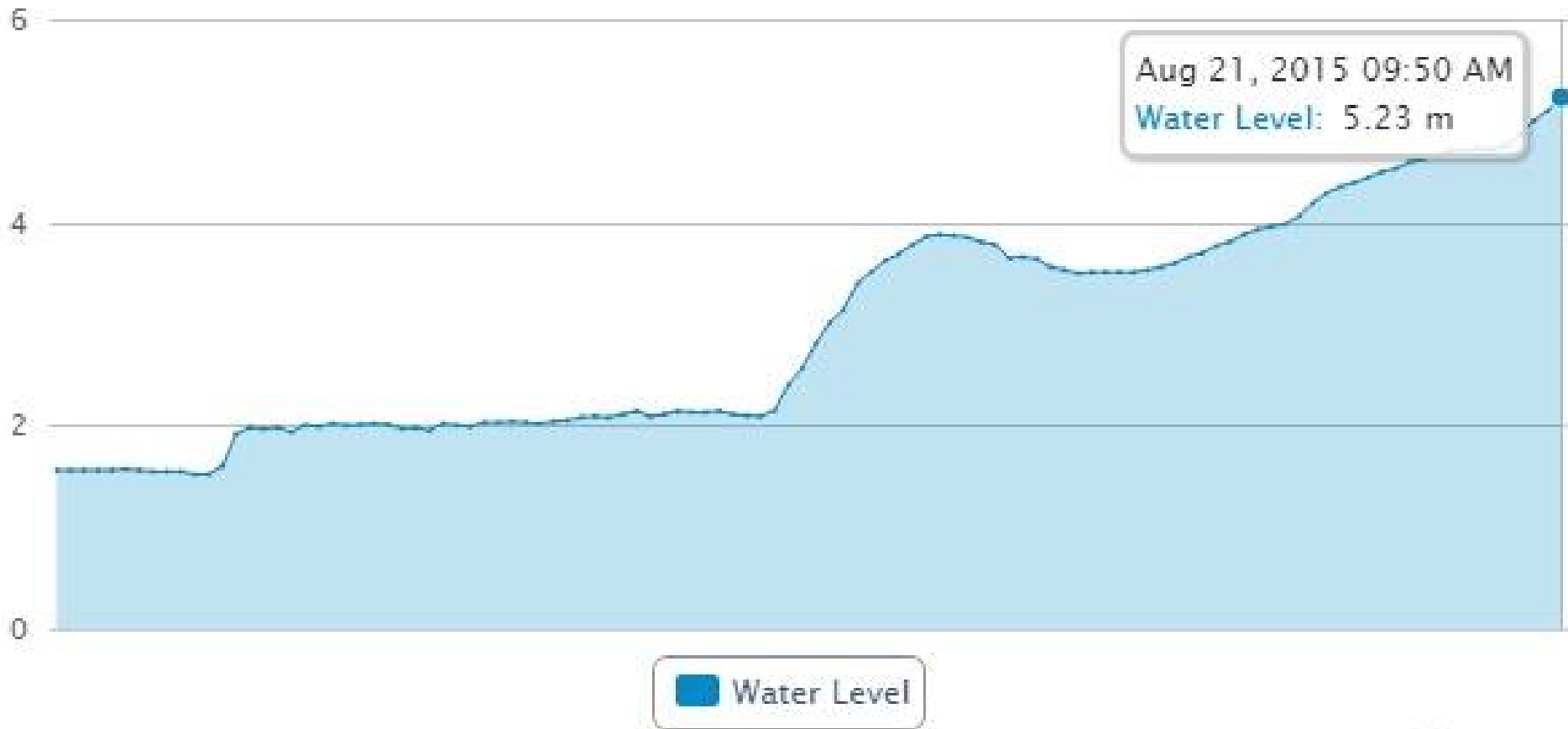
Like · Comment · Share · 🔄 87 🗨️ 4

# WARN



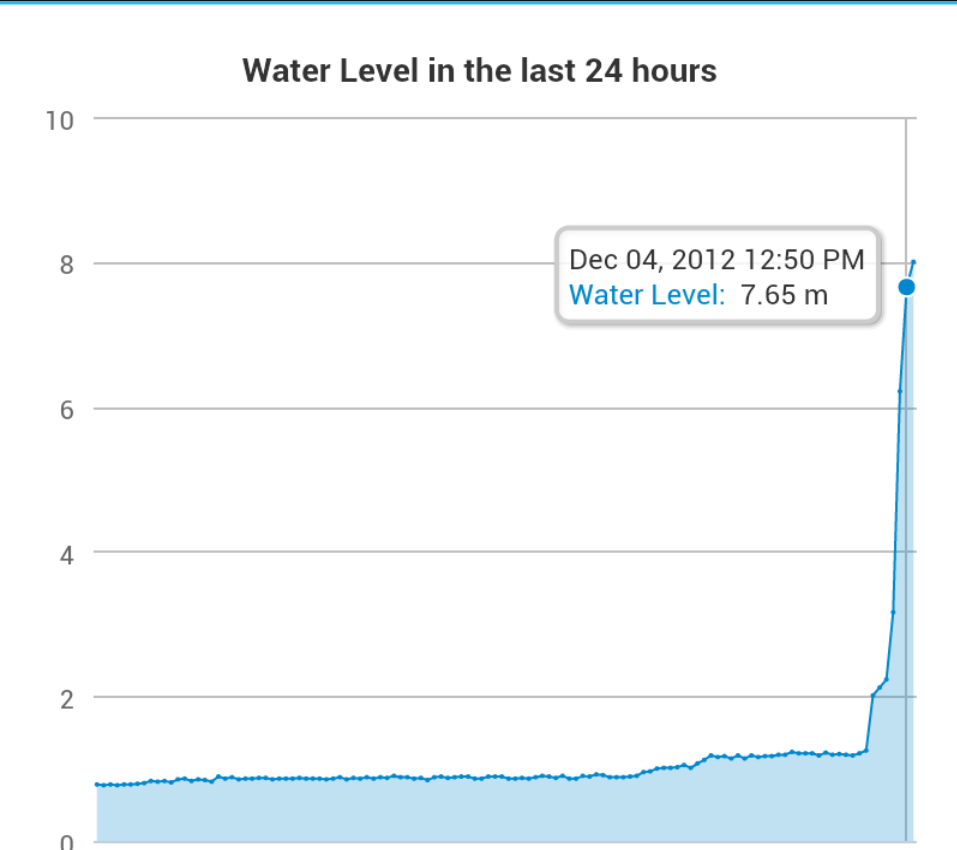
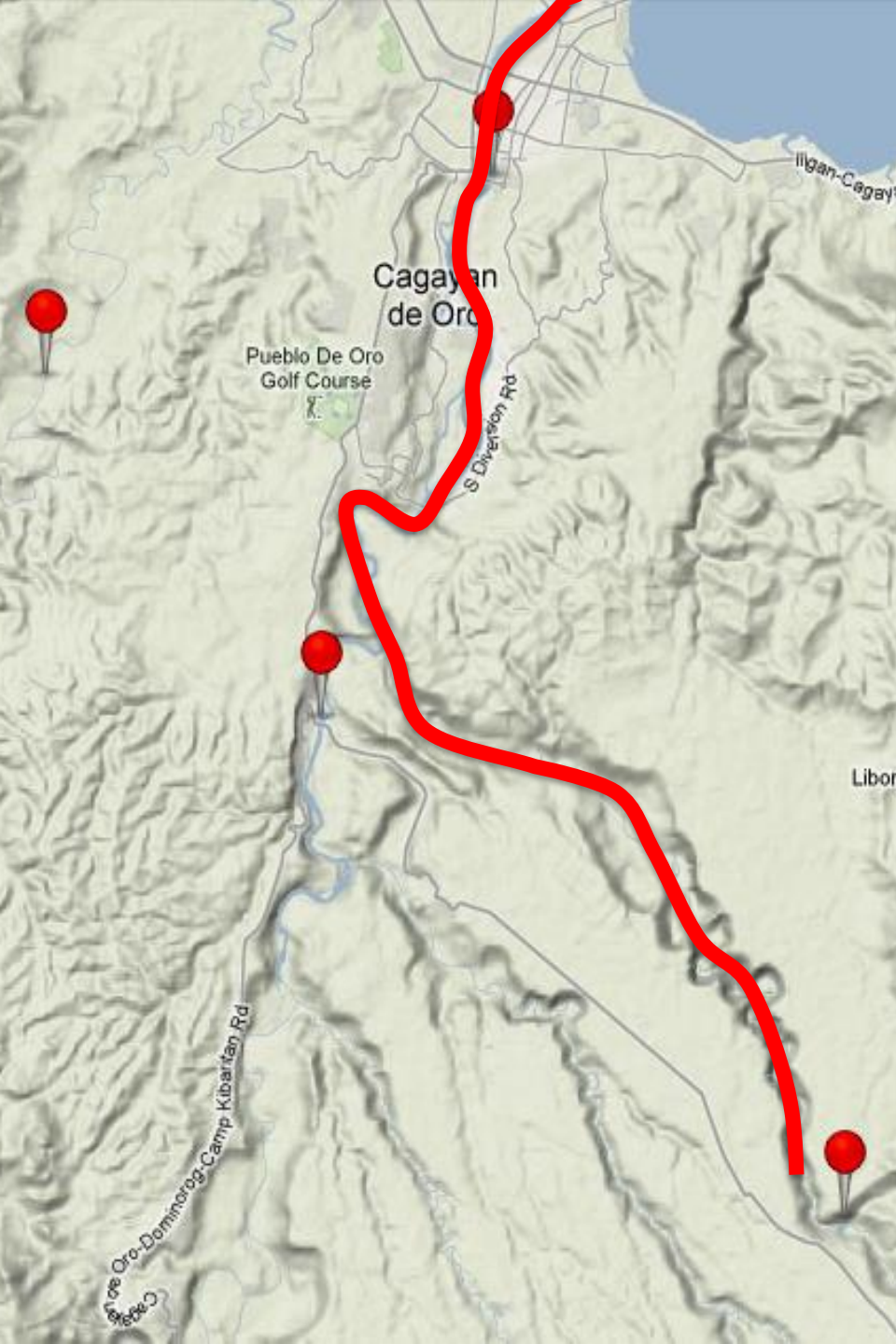


## Water Level in the last 24 hours



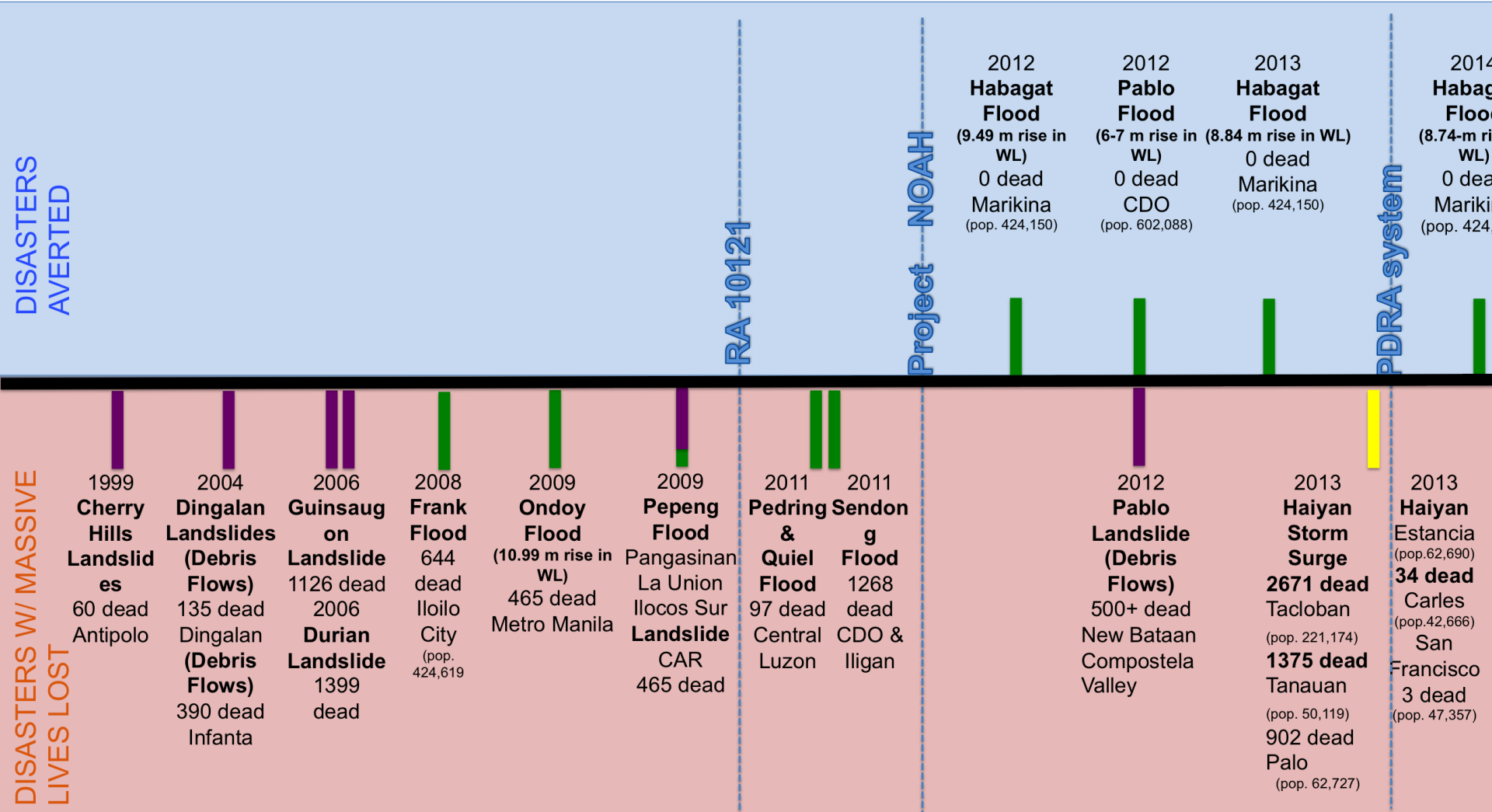








# FAILED DISASTER PREVENTION AND MITIGATION VS



DISASTERS AVERTED

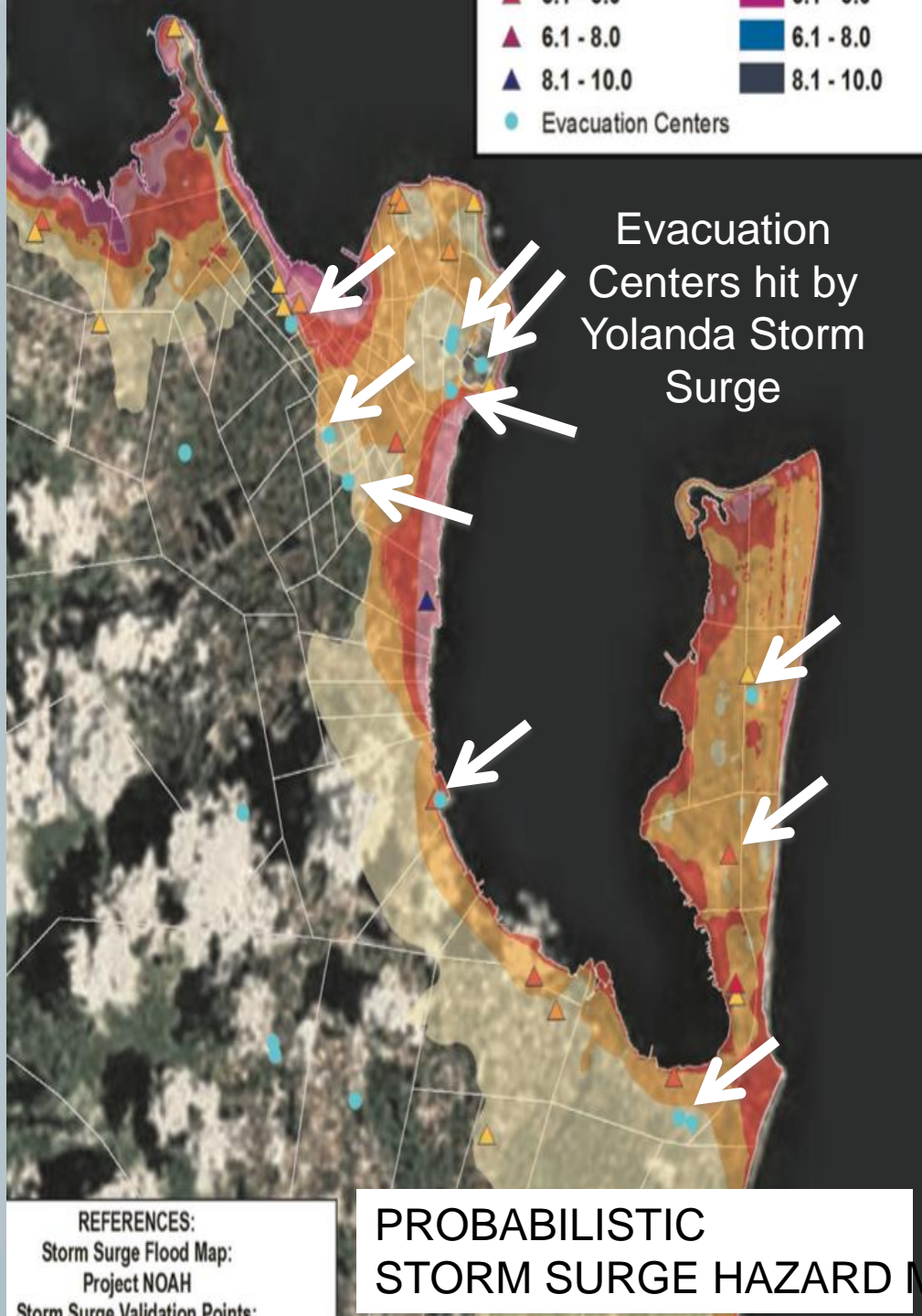
DISASTERS W/ MASSIVE LIVES LOST

RA-10121

Project NOAH

PDRA system





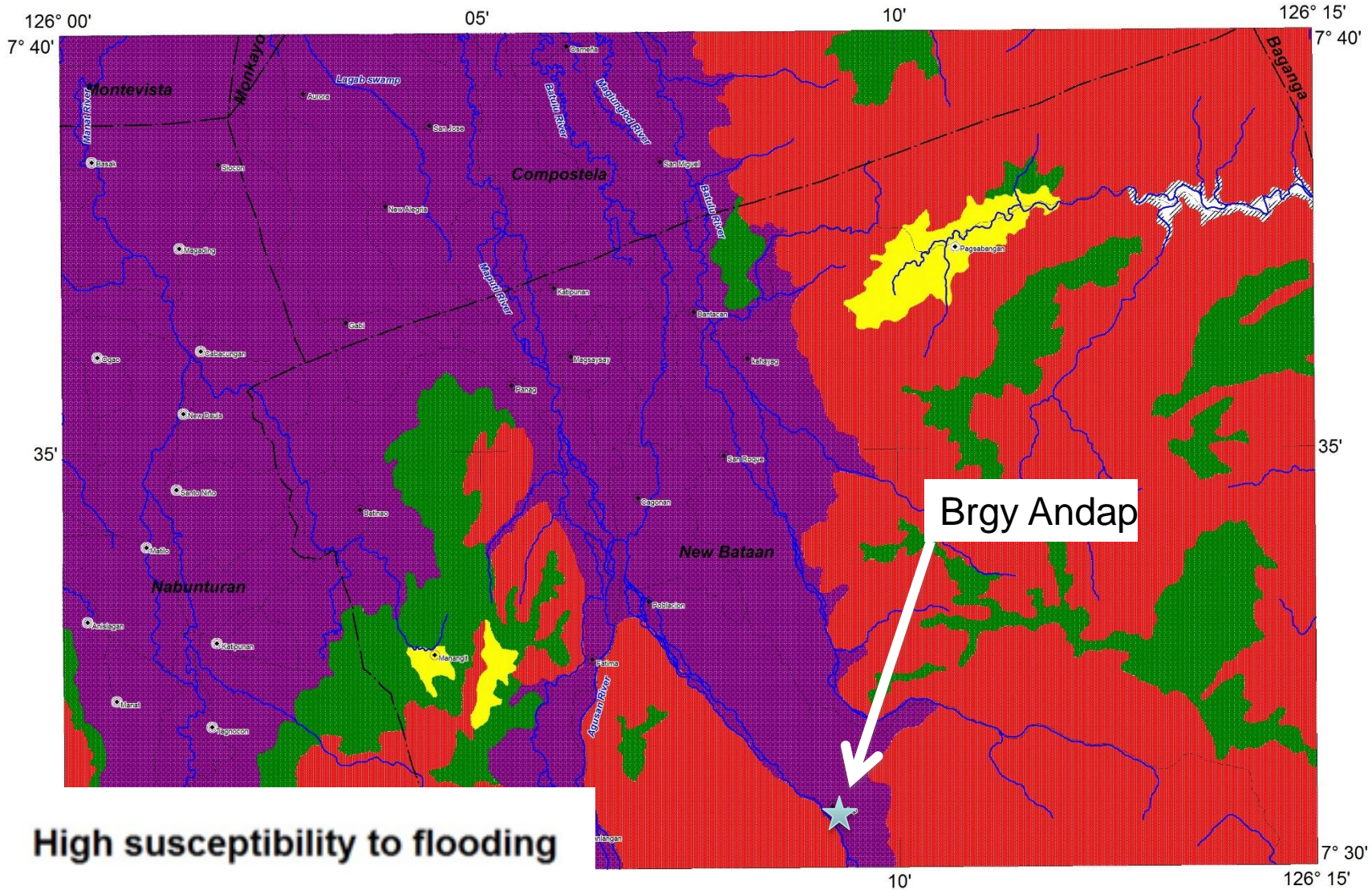


70 % of evacuation centers in Tacloban were hit by storm surges





# LANDSLIDE AND FLOOD SUSCEPTIBILITY MAP OF MANAT QUADRANGLE COMPOSTELA VALLEY AND DAVAO ORIENTAL PROVINCES, PHILIPPINES



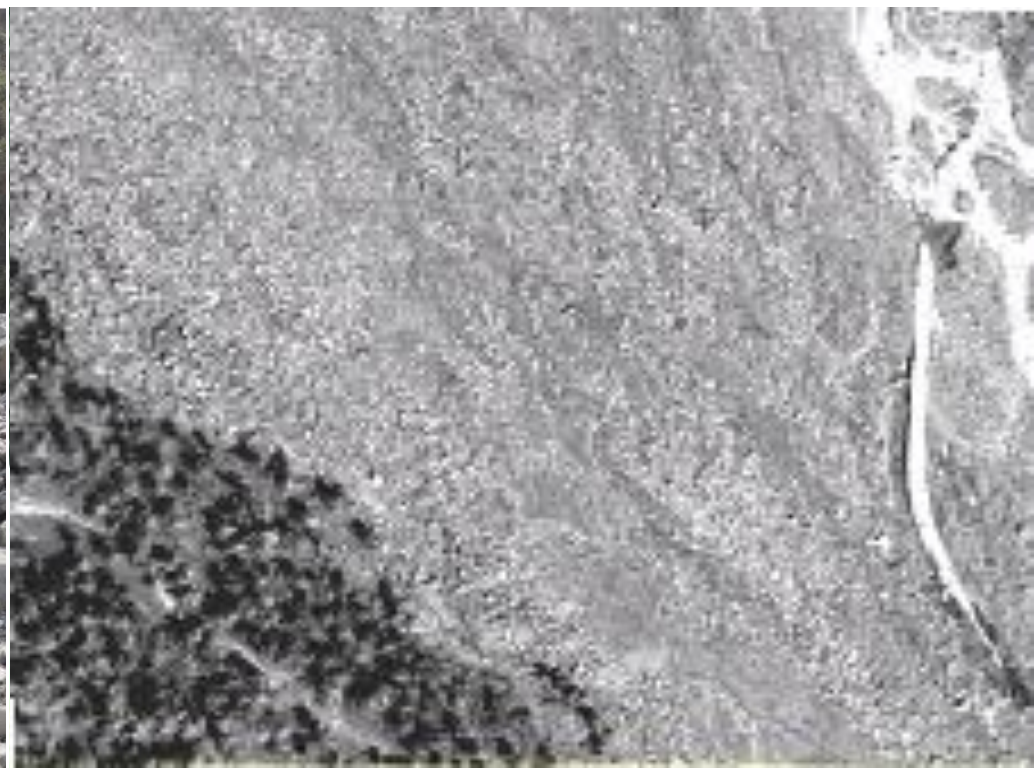
**LEGEND**

- Red square: High susceptibility to flooding
- Green square: High susceptibility to landslides
- Yellow square: Moderate susceptibility
- White square with black border: Water
- Purple square: Low susceptibility

**High susceptibility to flooding**







566 people were placed in an evacuation center overwhelmed by debris flows (This picture) which is a type of landslide