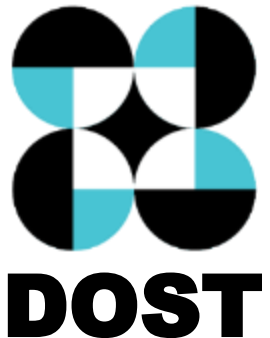


Research, Development and Innovation

ROWENA CRISTINA L. GUEVARA, Ph.D.

Undersecretary for Research and Development

Department of Science and Technology



Visayas Regional Scientific Meeting
20 March 2019



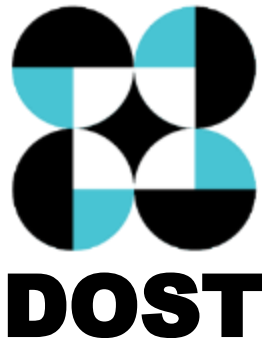
Research and development (R&D)

Comprising of **creative** work undertaken on a **systematic** basis in order to **increase the stock of knowledge**, including knowledge of man, culture and society, and the use of this stock of knowledge to **devise new applications**

Innovation

A process, product or service that is **new, original, or improved**, which **creates social and economic value**

New Products from Research, Development and Innovation



1. Biofertilizers and Plant Growth Enhancer

Irradiated CARAGEENAN Plant Growth Promoter



RICE YIELD
INCREASE

15-40%

MONGGO YIELD
INCREASE

33%



FERTIGROE slow release
fertilizer for corn and sugarcane



MICROMIX

**Biostimulant for Bell
Pepper and Bitter Gourd**



2. Feeds

Sure Feeds for Goats



Microalgal Paste as Aquafeeds

Protein-enriched Copra Meal (PECM)



3. Agriculture/Aquaculture Productivity Technologies

Longline

Sustainable method to grow mussels

Recycled plastic containers as floats

Cylindrical concrete anchor

Mussel socks made of used onion bags

Return on Investments
87%

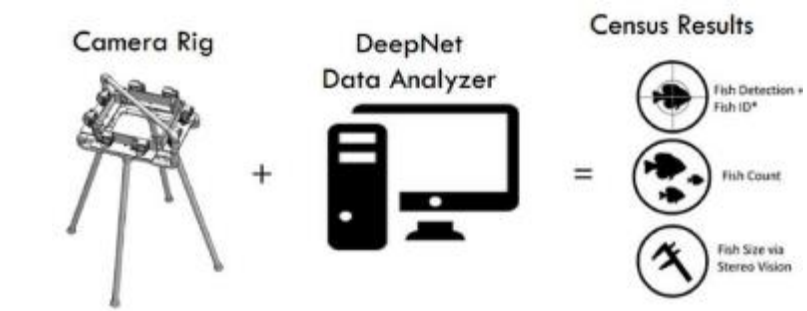
Payback Period
One Year

LAMP Kit for Shrimp Pathogens

Fish-i

A semi-automated fish population density, species identification, and biomass estimation system

- ### Advantages
- Safer, faster, cheaper
 - High scalability
 - More frequent census, more accurate results
 - Minimal fish avoidance effect



ARRAS

Automated Rapid Reef Assessment System



The workflow includes: Field Deployment (TEARDROP) → Data Collection → Data Processing (KIKO&STITCH) → Reporting and Analysis.

4. Medical Implant: **Axis KNEE SYSTEM**

✓ *Very affordable, costs 50% less than other knee implants in the market*



A total knee replacement system that is specifically designed for the Asian population



Editha de Guzman shows her knees a few weeks after her knee replacement surgery. *(Photo by Gerardo Palad, S&T Media Service, DOST-STII)*



Staff of Orthopedic International, Inc conduct hands-on training on surgical technique using various instruments of Axis Knee System. *(Text and Photo by: Allan Mauro V. Marfal, S & T Media Service)*

5. Biomedical devices

AGAPAY Exoskeleton



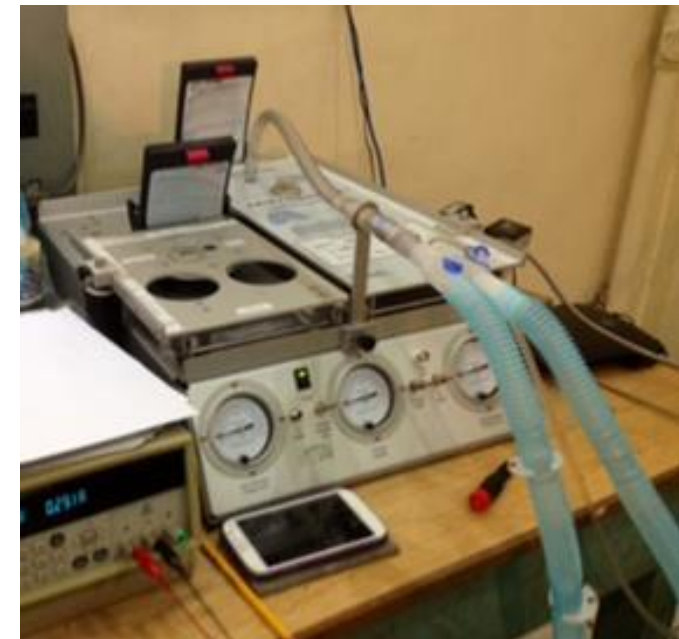
<https://www.facebook.com/AgapayPH>



https://news.mb.com.ph/2018/01/13/4-filipino-scholars-to-pursue-doctorate-studies-in-uk/?fbclid=IwAR1VLb5e4DnJUslLu0eZyYrCv-cB_5m3SU4jxhdFjYX6rAdceGL4ih5s1CU



compact, affordable, safe, and effective ICU Ventilator



6. Diagnostic Kit: BIOTEK-M Aqua Kit



100% Filipino designed and locally-developed technology



<http://tapitechnicom.dost.gov.ph/portfolio/biotek-m-dengue-aqua-kit-2/>



- ✓ Affordable rapid test kit for accurate detection of dengue infection within an hour
- ✓ Has high sensitivity, high specificity, robust, and is less expensive than current diagnostic tests in the market



Gold Awardee during the 46th International Exhibition of Inventions Geneva held on 11-15 April 2018 at Palexpo, Geneva

<http://www.pchrd.dost.gov.ph/index.php/news/6354-biotek-m-wins-gold-medal-at-salon-international-des-inventions-de-geneve>

7. For Proper Nutrition



Pancit Canton with Squash



Bakery Products with Squash

TUBIG TALINO™

Iodine-rich Drinking Water



Rice-Mongo Blend



Rice-Mongo Curls



Rice-Mongo Sesame Blend



RICE MEALS

- 260 calories per 200g pouch
- Second stage emergency food
 - can be consumed when water and utilities are already restored

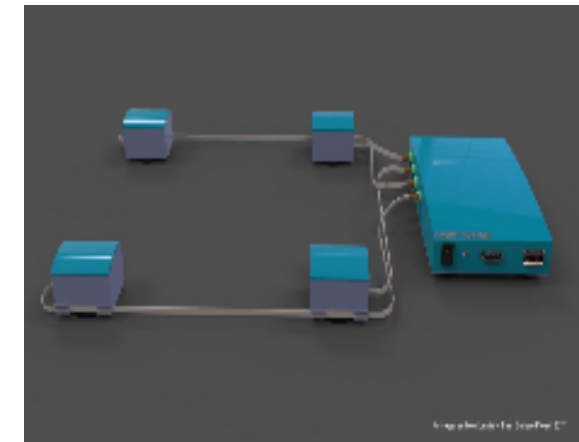


8. Educational Tools

Versatile
Instrumentation System
for Science Education
and Research



Smart Surface Technology



Learning English Application for Pinoys



9. Water Treatment Materials

**BEFORE
VIGORMIN**



**AFTER
VIGORMIN**



MIRACLE POWDER:
TREATMENT OF SEPTIC/WASTE WATER



10. Solid Waste-to-energy technologies

Biogas Digester



BIOGAS

Heat output delivered is about 78.4-89.6 Kcal/liter

Pyrolyzer



GAS AND OIL

- with feed rate of about 6 kg/hr of shredded laminates
- Heating value of oil is 17,460 BTU/lb.

Carbonizer and Briquetting Machine



CHARCOAL BRIQUETTE

11. Sustainable Transportation

Hybrid Trimaran



Rapid Charging E-Vehicle Station

Charging in Minutes (CharM)



<https://www.eee.upd.edu.ph/news/charm-project>

12. Monitoring water availability

Automated Real-time Monitoring System (ARMS)

Transmit real-time data to the office of NWRB for monitoring



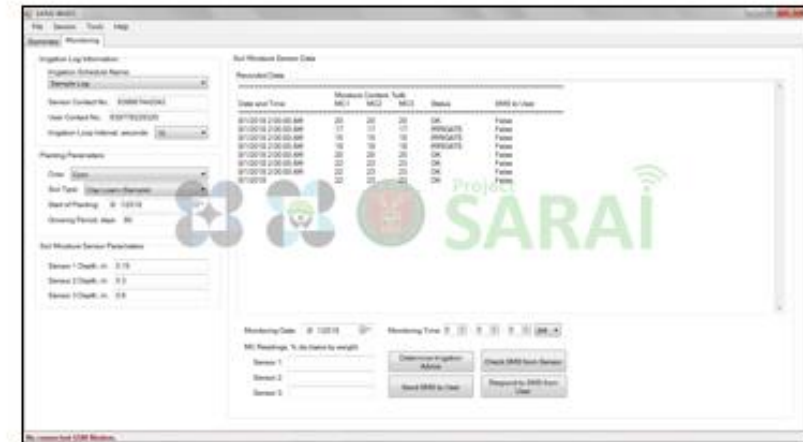
NATIONAL WATER RESOURCES BOARD



Water Advisory for Irrigation Scheduling System (WAISS)



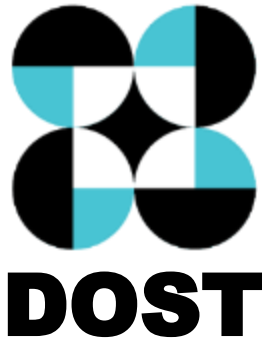
rainfall, temperature, atmospheric pressure, soil moisture, wind speed and evaporation



Innovation Drivers in the Investment Priority Plan 2017-2019

- Research and development activities
- Clinical trials (including drug trials)
- Centers of Excellence (e.g., academic and medical facilities)
- Innovation centers
- Business incubation hubs
- Fablabs/co-working spaces
- Shared Service Facility for MSMEs
- ***Commercialization of new and emerging technologies and products of DOST or government-funded R&D***

New S&T Facilities



1. Space S&T Applications and Services for Environmental Monitoring and Natural Resources Management



Data and Asset Management



Science Data Infrastructure



Data Processing and Analytics



2. For developing Medicines



- 10 Tuklas Lunas Centers
for screening plants and marine samples or endemic natural products for therapeutic properties



- Bioactivity and Toxicity Facility
for Inflammation, Diabetes, Hypertension, Pain, Gout, Cancer, Cholesterol-lowering, Immunomodulation



3. For developing and Testing New Products

MIRDC Die and Mold Solution Center

Sample Product



Food Innovation Center (FIC)



3. For developing and Testing New Products

ADVANCED DEVICE AND MATERIALS TESTING LABORATORY (ADMATEL)



To reinforce/upgrade the Failure Analysis (FA) and materials testing facilities of our local industry, provide shorter turn-around time and less expensive analysis

3. For developing and Testing New Products



ELECTRONICS PRODUCT DEVELOPMENT CENTER (EPDC)



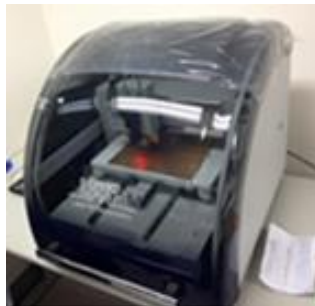
PCB
Prototyping
and
Fabrication
Facility



EMC and
Other Test
Facility



Product
Prototyping
Laboratory



3. For developing and Testing New Products

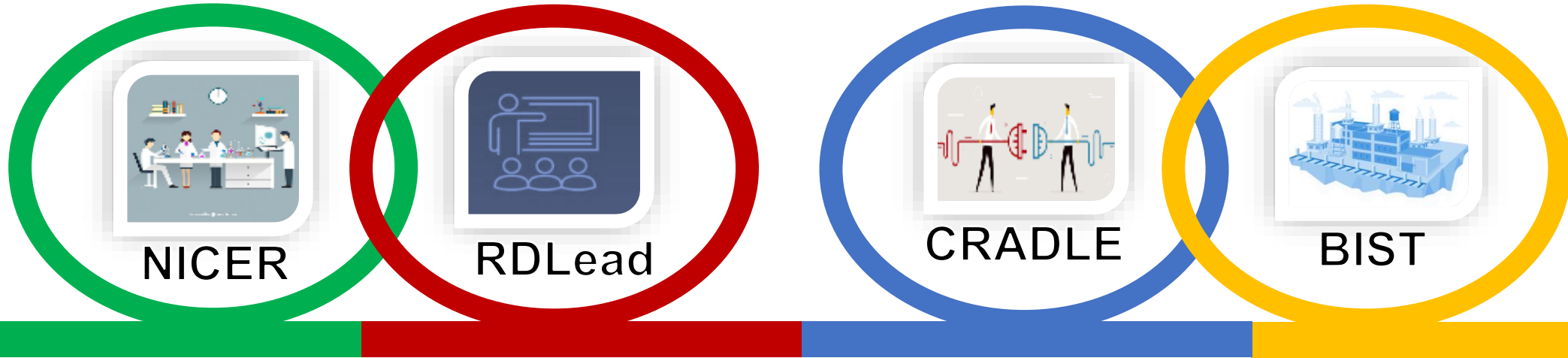


4. For Incubating Startups

20 Technology Business Incubators and **2 Innovation Hubs** Startups



Accelerated R&D Program for Capacity Building of Research and Development Institutions and Industrial Competitiveness



NICER

RDLead

CRADLE

BIST

Niche Centers in the Regions (NICER) for R&D

Establish R&D Centers in the regions to promote regional development.

R&D Leadership (RDLEad) Program

Engage R&D experts to lead in strengthening the research capabilities of the Higher Education Institutions (HEIs) and Research Development Institutions (RDIs).

Collaborative Research and Development to Leverage Philippines Economy (CRADLE) Program

Create synergistic academe-industry relationship to invigorate Philippine R&D.

Business Innovation through S&T (BIST) for Industry Program

Facilitate the acquisition of strategic and relevant technologies by Filipino Companies to support R&D activities.



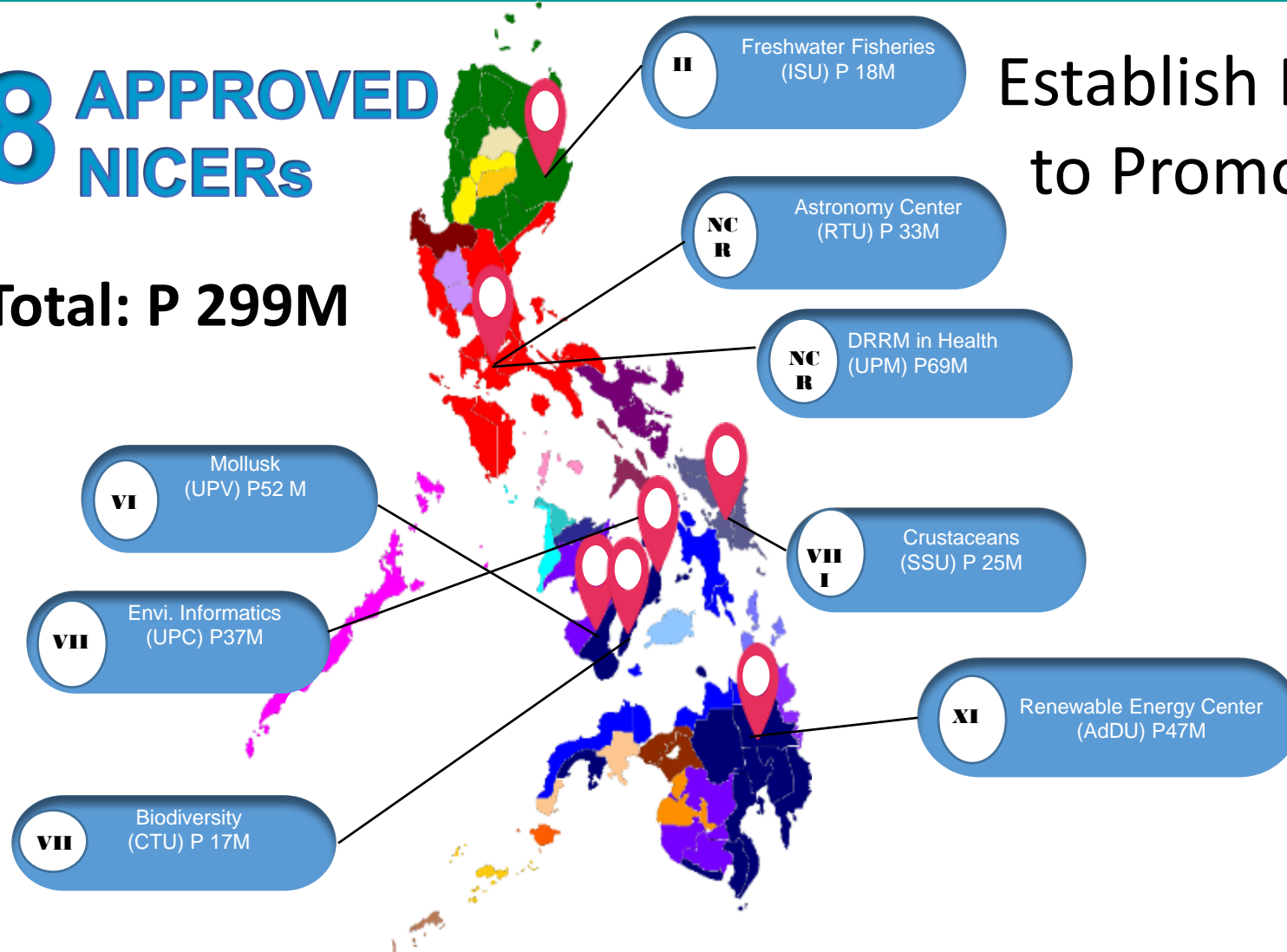
NICER

Niche Centers in the Regions for R&D

**8 APPROVED
NICERs**

Total: P 299M

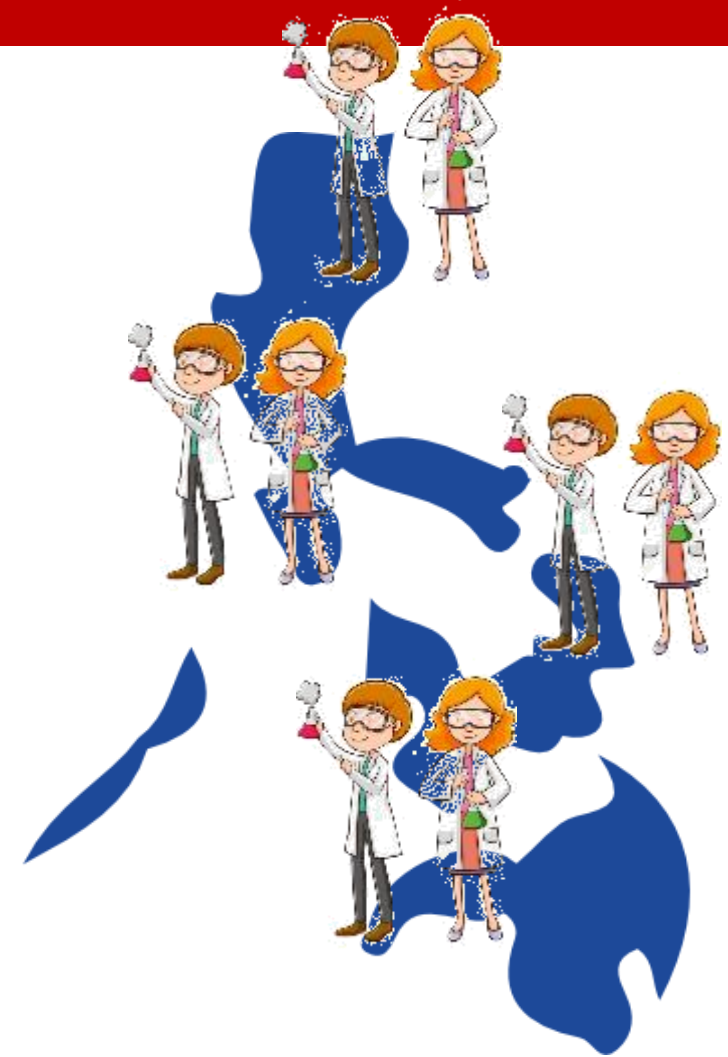
Establish R&D Centers in the Regions to Promote Regional Development



RDLLead

R&D Leadership

Engage R&D experts to lead in
Strengthening the research
capabilities of the HEIs and
RDIs



Who can become an RD Leader?

- ✓ A doctorate degree in the relevant field from a reputable academic institution;
- ✓ With at least ten (10) years professional experience in the relevant field;
- ✓ Has made an outstanding contribution in his/her field of specialization;
- ✓ Has demonstrated competent training and leader skills;
- ✓ Has refereed publications;
- ✓ In good health with no accountabilities with DOST and previous employer/s.



CRADLE

Collaborative Research and Development to Leverage Philippine Economy

CRADLE Program creates synergistic relationship between the academe and the industry with the goal of invigorating Philippine R&D



Industry to identify a problem

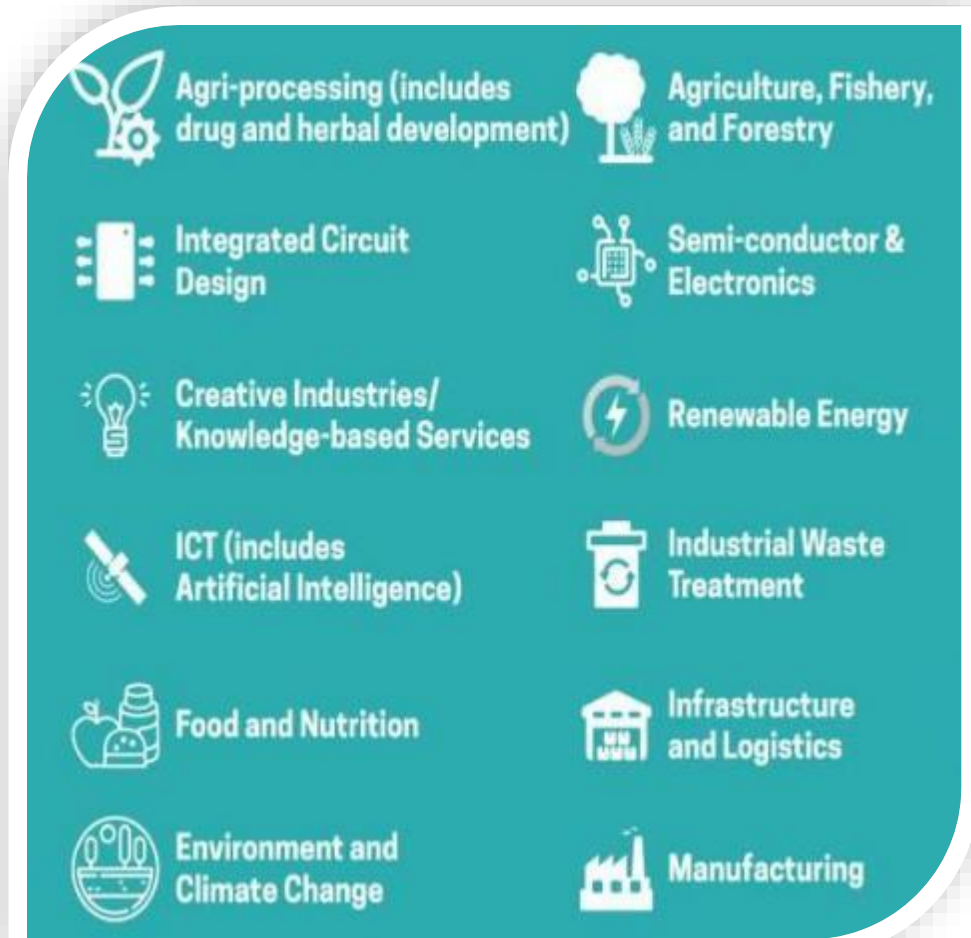






Partner HEI or RDI to undertake the R&D to find solution



GENERAL CRITERIA

All CRADLE proposals must be in line with the priority R&D areas and industries identified by the DOST and DTI



-  **Maximum funding is 5M, for 1 to 3 years**
-  **HEI/RDI should have at least 1 partner company**
-  **Partner company will adopt the R&D output**
-  **Partner company will provide 20% counterpart***

**may be in cash, kind or person-hour support for the academe.*

Agriculture, Aquatic & Natural Resources

REGION	TITLE	UNIVERSITY (MAIN PROPONENT)
XI	Synergize Academe-Industry Research Undertaking to Improve Productivity through Development of Banana Diseases Surveillance System	University of Southeastern Philippines and HIJO Resources Corporations
IV-A	Micropropagation of Selected Genetically-verified, Superior Bamboo to Protect the Environment and Develop an Alternative Wood Industry	UPLB and Carolina Bamboo Garden
NCR	Development of Aquafeed from “ <i>Lab-lab</i> ”	DLSU and SANTEH Feed Corporation
XI	Fermentation and Purification Research to Produce Food Grade, Pharmaceutical-Grade and Polymer Grade Lactic Acid	UP Mindanao and Monde Nissin Corporation



Food and Food Industry

REGION	TITLE	UNIVERSITY (MAIN PROPONENT)
NCR	Development of Chicken Egg White Powder and Granules from Low value Edible Shell Eggs	UPD and Batangas Egg Producers Cooperative
IV-A	Reinventing Ice Cream into a Functional Food Matrix	UPLB and Sugar and Ice Confections Inc.
VI	Metabolomics as Tool for the Discovery of Hypocholesterolemic Natural Products from Pineapple	University of San Agustin and Del Monte Philippines
NCR	Post-Treatment of Food Processing Wastewater Effluent for Nutrient Removal	ITDI and Central Macaroni Co. Inc., (CENMACO)



CENMACO

ICT and Electronics

REGION	TITLE	UNIVERSITY (MAIN PROPONENT)
NCR	PCOPEIA: Predictive Chromatography of Organic Plant Extracts with Intelligent Agents	TIP- Manila and Pascual Pharma Corp.
XI	PISOLAR: Payment Innovation for SHS Ownership by Lay Away Routine	University of Southeastern Philippines and LeadTech Inc.
NCR	Enhancement and Market Validation of Plasma Enhanced Chemical Vapor Deposition Industrial Prototype for Nitride- Based Coatings	UPD and Asian Semiconductor Electronics Technologies (ASET) Corporation
IV-A	Development of a Design Guideline Using Finite Element Analysis (FEA) for Semiconductor Packages	DLSU-Laguna and Integrated Micro-Electronics Inc (IMI)



BIST

Business Innovation Through S&T for Industry



BIST Program facilitates the acquisition of **strategic and relevant technologies** by **Filipino companies** for immediate incorporation in their **R&D activities**.



70% of the eligible expenses*

30% must be sourced by the applicant

*will be refunded to DOST at **zero percent** interest

Eligible Expenses

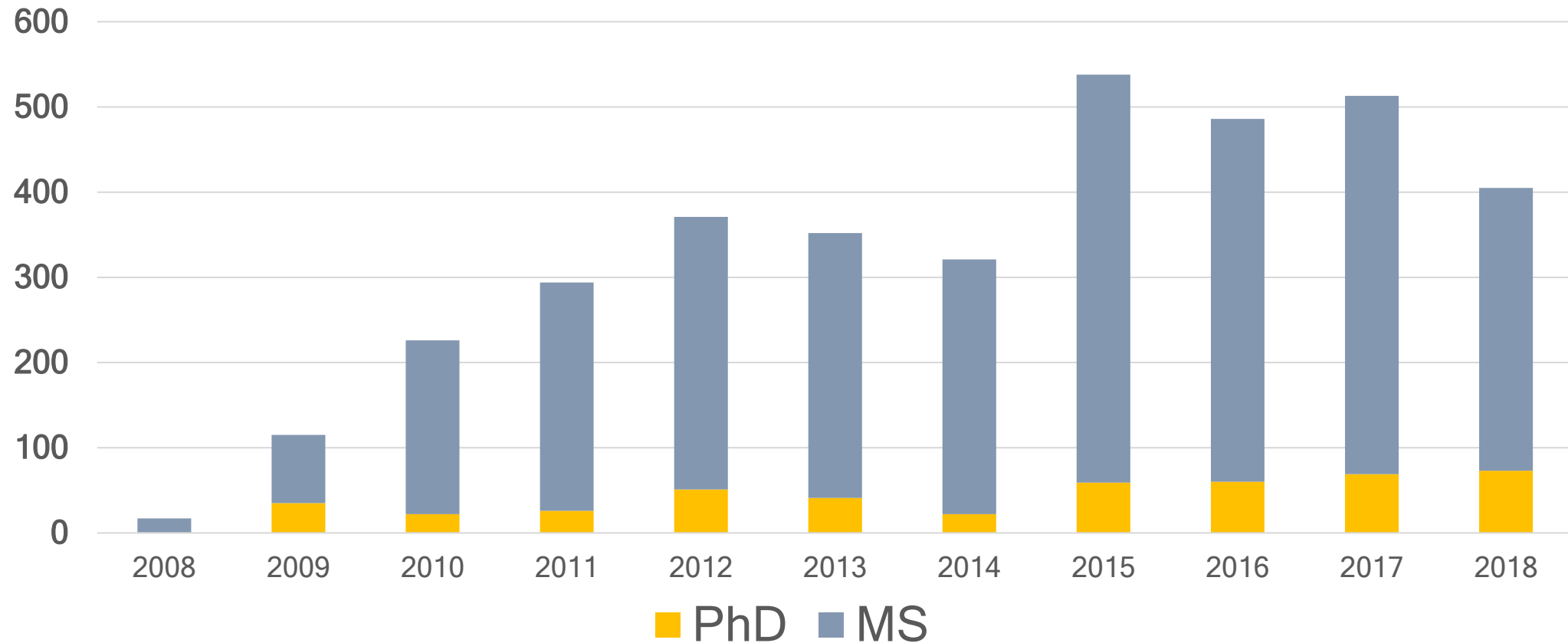
Acquisition of technology could be in the form of acquiring **know-how/rights/blueprints** of a **registered Intellectual Property** via one of the following methods:

- a. Licensing of technology
- b. Outright purchase of technology
- c. Acquisition of hardware/software for R& D

NOTE: R&D does not include market research



ASTHRDP & ERDT Graduates 2008-2018



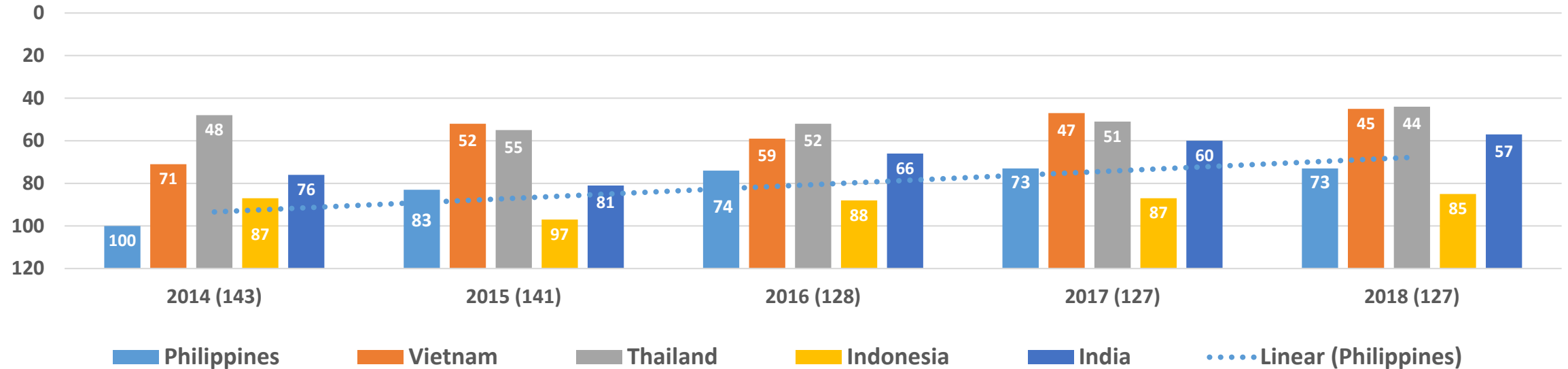
105 Disciplines

- ASTHRDP awarded scholarships for **5,009 MS** and **1,069 PhD**
- ASTHRDP graduates: **2,111 MS** and **304 PhD**

26 Disciplines

- ERDT awarded scholarships **2,520 MS** and **389 PhD**
- ERDT graduates **1,009 Ms** and **119 PhD**

Global Innovation Index 2018



STRENGTHS:

graduates in science & engineering (#17);

trade, competition & market scale (30);

firms offering formal training (9);

research talent (7);

high & medium high-tech manufactures (27);

ICT services exports (8)

WEAKNESSES:

ease of starting a business (#121);

education (#105);

expenditure on education (#109);

gross expenditure on R&D (#97);

pupil-teacher ratio (#95);

tertiary inbound mobility (#104)

global R&D Companies (#40)

scientific & technical articles (#120);

new businesses/th population (#91);

creative goods & services (#104),

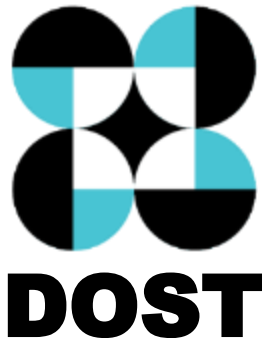
online creativity (85)

Research, Development and Innovation

ROWENA CRISTINA L. GUEVARA, Ph.D.

Undersecretary for Research and Development

Department of Science and Technology



Visayas Regional Scientific Meeting
20 March 2019

