

Republic of the Philippines
NATIONAL ACADEMY OF SCIENCE AND TECHNOLOGY
3rd Level Science Heritage Building, DOST Compound, Bicutan, Taguig City
Tel. Nos. 837-2071 loc. 2171; 838-7792; Fax No.: 837-3170
Website: www.nast.ph; email: nast.bac@gmail.com


SUPPLEMENTAL/BID BULLETIN NO. 2

This Supplemental/Bid Bulletin is issued to inform prospective bidders of the procurement project “Interior Renovation and Curatorial Upgrade for PSHC (Phase I)” of the following:

1. Supplemental Plans/Drawings are attached (or download from www.bit.ly/pshcsupplemental)
2. Revised Bill of Quantities is attached (or download from www.bit.ly/pshcsupplemental)
3. The ABC is still the same at P24,987,146.99.

This bulletin shall form an integral part of the Bid Documents for the said project.

For guidance and information of all concerned.


ROSEMARIE S. ESPINO
Chief Administrative Officer

Section VIII. Bill of Quantities

ITEM NO.	SCOPE OF WORK	QUANTITY	UNIT	LABOR	MATERIAL	TOT UNIT COST	TOTAL COST
Interior Renovation and Curatorial Upgrade for the PSHC (Phase I)							
I.	General Requirements						
	Mobilization and Demobilization	1.00	lot				
	Temporary Facility	1.00	lot				
	Bonds and Insurances	1.00	lot				
	Safety Requirements.	1.00	lot				
	Tools & Equipment	1.00	lot				
	Scaffoldings.	1.00	lot				
	Hauling & Disposal of Debris	1.00	lot				
	As built plans submission	1.00	lot				
II.	Demolition Works						
	<i>Exhibit Area</i>						
	Stripping of Floor Tiles	265.53	sqm				
	Chipping of Existing Concrete Topping of Floor Tiles	265.53	sqm				
	Ceiling (Demolition)	265.53	sqm				
	Aluminum Fixed Glass, Window & Doors (Demolition)	257.57	sqm				
	CHB Wall (Demolition)	33.00	sqm				
	<i>Vestibule 1 & 2</i>						

		Stripping of Floor Tiles	37.38	sqm				
		Chipping of Existing Concrete Topping of Floor Tiles	37.38	sqm				
	<i>Merchandising Area/ Store</i>							
		Ceiling (Demolition)	37.42	sqm				
		Stripping of Floor Tiles	37.42	sqm				
		Chipping of Existing Concrete Topping of Floor Tiles	37.42	sqm				
III.	Concrete Works							
	<i>Exhibit Area</i>							
		Concreting/Topping of Floor	265.53	sqm				
	<i>Vestibule 1 & 2</i>							
		Concreting/Topping of Floor	37.38	sqm				
	<i>Merchandising Area/ Store</i>							
		Concreting/Topping of Floor	37.42	sqm				
IV.	Masonry Works							
	<i>Exhibit Area</i>							
	<i>Vestibule 1 & 2</i>							
		Overhead CHB Wall along Doors & Windows	46.00	sqm				
	<i>Merchandising Area/ Store</i>							
V.	Doors and Windows(Refer to Supplemental Plans/ Drawings)							
	<i>Exhibit Area</i>							
		Automated Sliding Glass Door(12mm Tempered Glass)@2.40 ht.	4.00	sets				

	<i>Vestibule 1 & 2</i>							
	Doors	Automated Sliding Glass Door(12mm Tempered Glass)@2.40 ht.	4.00	sets				
		Double Swing Door(12mm Temp. Glass @ 2.40 m height)	4.00	sets				
		Single Swing Door(12mm Temp. Glass @ 2.40 m height)	1.00	set				
	Windows	Fixed Glass with Aluminum Frame (12mm Temp. Glass@ 2.40m Height)	90.27	sqm				
	<i>Merchandising Area/ Store</i>							
VI.	Electrical Works (Refer to Supplemental Plan/Drawing)							
	<i>Exhibit Area</i>							
		Roughing-ins (including fittings and fixtures)	1.00	lot				
	C.Outlet	Floor Outlet with wiring to junction box	13.00	sets				
		ACU Outlet with wiring to junction box	7.00	sets				
		Panel board, Circuit breaker & Main Feeder to include wiring	1.00	lot				
	Lighting	Recessed LED Downlight	67.00	pcs				
		LED Daylight	12.00	pcs				
		Inground LED Light, IP 68, water-resistant	27.00	pcs				
	Conduits	Telephone/Data System (design, layout and installation)	1.00	lot				
	CCTV	CCTV Camera and Accessories (to include PC Monitoring System)	1.00	lot				
		(design, layout and installation)						

	Vestibule 1 & 2							
	Merchandising Area/ Store							
VII.	Mechanical Works (Refer to Supplemental Plan/Drawing)							
	Exhibit Area							
		Floor Mounted 5TR Inverter with Installation	8.00	sets				
		Cooling: 60,000 BTU/h	-	-				
		Power Consumption: 5,370 W	-	-				
		Rated Current: 15.5 A	-	-				
		EER: 11 BTU/h-W	-	-				
		Indoor Noise Level (low): 49.2 dB(A)	-	-				
		Indoor Air Flow (High): 2,200 m3/h	-	-				
		Maximum Pipe Length: 50 m	-	-				
		Maximum Diferrence in Level: 30 m	-	-				
		Tubing Connection Diameter (Liq/Gas): 9.52mm/19mm	-	-				
		Power Supply: 220-240v/60hz/3Ph	-	-				
		Refrigerant: R410A	-	-				
		Compressor: Twin-Rotary	-	-				
		Unit Dimesion (WxDxH): 610 mm x 390 mm x 1,925 mm	-	-				
		Carton Dimension (WxDxH): 2,050 mm x 745 mm x 1925 mm	-	-				
		Weight (Net/Shipping): 59 Kg/77 Kg	-	-				

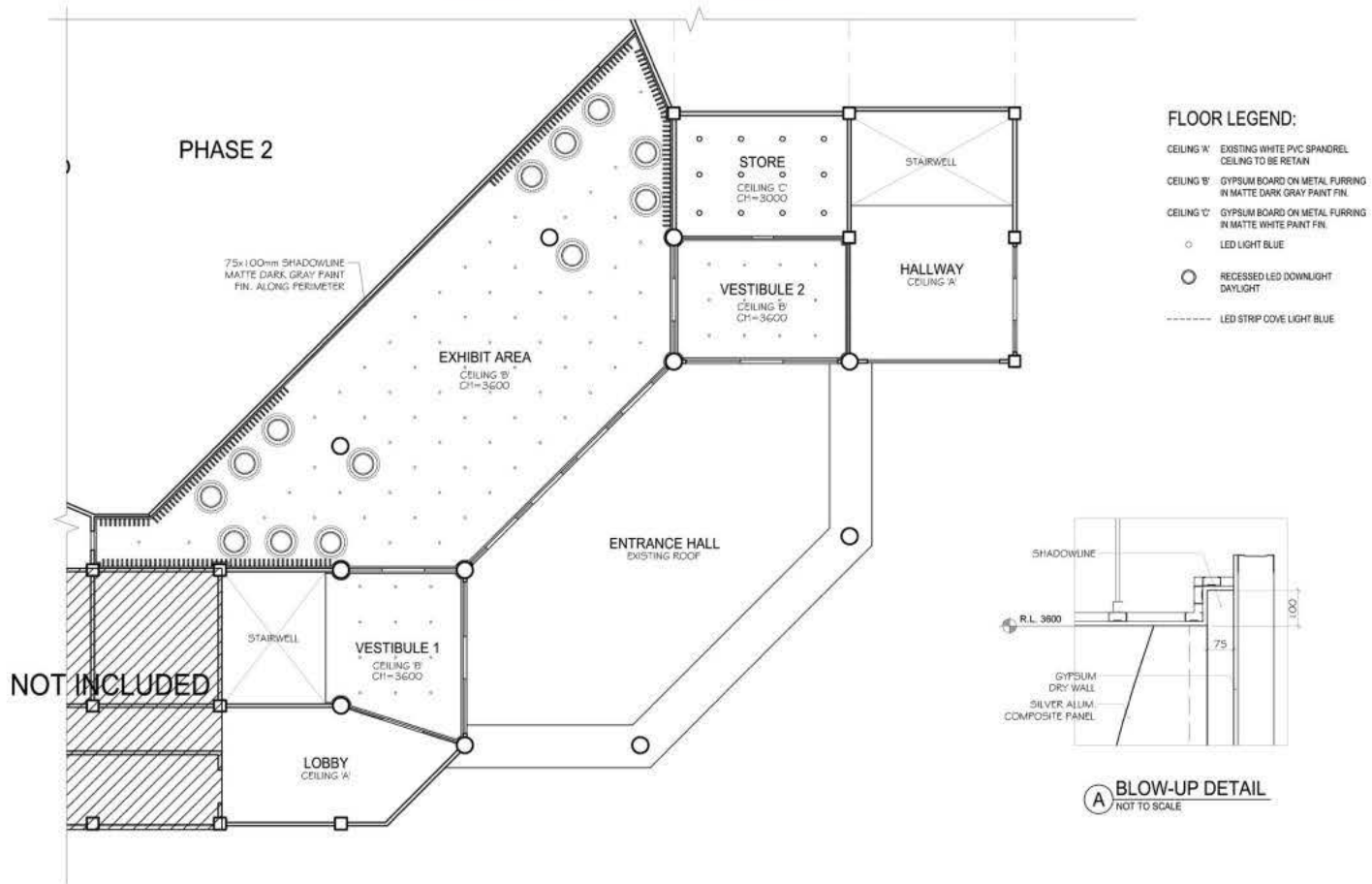
	<i>Vestibule 1 & 2</i>							
	<i>Merchandising Area/Store</i>							
VIII.	Finishing Works Floor, Wall, Ceiling							
	<i>Exhibit Area</i>							
	Ceiling	Plain Gypsum Board ceiling	37.62	lm				
		Flat Ceiling @ Metal Frame - 13mm MR Gypsum Board	265.53	sqm				
	Floor	Concrete Polishing of Floor Slab	265.53	sqm				
		Floor Accent Black Quartz Tile/Stone	3.00	sqm				
	Wall	Restoration of Damaged CHB Wall	1.00	lot				
		Multimedia Slat Wall (Silver aluminum composite panel)	126.00	sqm				
		Video Wall Border with Metal Pearl Steel	31.00	lm				
		Slit Wall @ Video wall	12.00	lm				
	<i>Vestibule 1 & 2</i>							
	Floor	Concrete Polishing of Floor Slab	37.38	sqm				
	<i>Merchandising Area/Store</i>							
	Ceiling	Flat Ceiling @ Metal Frame - 13mm MR Gypsum Board	37.42	sqm				
	Floor	Concrete Polishing of Floor Slab	37.42	sqm				
IX.	Painting Works							
	<i>Exhibit Area</i>							
		Ceiling	265.53	sqm				
		Existing Column	40.00	sqm				

		Drywall	200.00	sqm				
		Multimedia Slit Wall (Ducco Finish)	300.00	sqm				
	<i>Vestibule 1 & 2</i>							
		Overhead CHB Wall	300.00	sqm				
	<i>Merchandising Area/ Store</i>							
		Ceiling	37.42	sqm				
X.	Equipment and Display (to include bracing and mounting)							
	<i>Exhibit Area</i>							
		Steel Framing of Video Wall (Angular/Tubular) – Design and install	40.00	sqm				
		Hologram Capsule (Fabrication, delivery and installation including videos, photos, content development, etc.)	13.00	sets				
		Video Wall- LED Monitor D-Series (D3/D4) - 8mx 2.5m	1.00	lot				
		D3V (5000mmx500mmx100) with spare	82.00	pcs				
		MCTRL660 Sending Box	2.00	pcs				
		Control pc. With Accessories & w/ 2Output DVI/HDMI	1.00	set				
		LVP615s Video Processor	1.00	pc.				
		Electrical Works	1.00	lot				
		25KVA UPS	1.00	PC				
		Ultra-short throw projector for the Hologram Exhibit	13.00	sets				
		Projection System: 3LCD Technology						

		LCD Panel: 0.59 inch with D9						
		Colour Light Output: 3,500 Lumen - 2,900 lumen (economy)						
		White Light Output: 3,500 Lumen - 2,900 lumen (economy)						
		Resolution: WXGA, 1280x800, 16:10	-	-				
		Contrast ratio: 14,000:1						
		Lamp: 250 W, 5,000 h durability, 10,000 h durability (economy mode), 9,000 h durability (economy mode)						
		Keystone Correction: Manual vertical: +- 3 degrees, manual horizontal: +- 3 degrees						
		Colour Reproduction: up to 1.07 billion colors						
		Projection Ratio: 0.28 - 0.37:1						
		Zoom: Digital, Factor: 1 - 1.35	-	-				
		Image Size: 60 inches - 100 inches	-	-				
		Projection Distance wide: 0.4 m (60 inch screen), tele: 0.6 m (100 inch screen)	-	-				
		Focal Distance: 3.7 mm	-	-				
		Focus: Manual	-	-				
		Offset: 5.8:1						
		USB Display Function: 3 in 1: Image/Mouse/Sound						
		Interfaces: USB 2.0 Type A, USB 2.0 type B, RS - 232C, HDMI in (3x), Composite in, RGB in (2x), RGB out, Stereo mini jack audio out, Stereo mini jack audio in (3x), microphone						

		input, ethernet interface (100 Base-TX//10-Base-T), Wireless LAN IEEE 802.11b/g/n (optional), VGA in (2x), VGA out, MHL						
		Security: Kensington Lock, Password Lock, Security cablr hole, Wireless LAN unit lock, Password protection						
		Warranty: 36 months On-site service or 8,000 h, Lamp: 12 months or 1,000 h.						
	<i>Vestibule 1 & 2</i>							
	<i>Merchandising Area/Store</i>							
TOTAL								

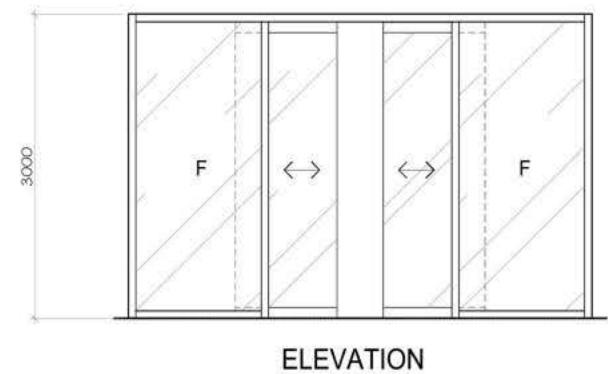
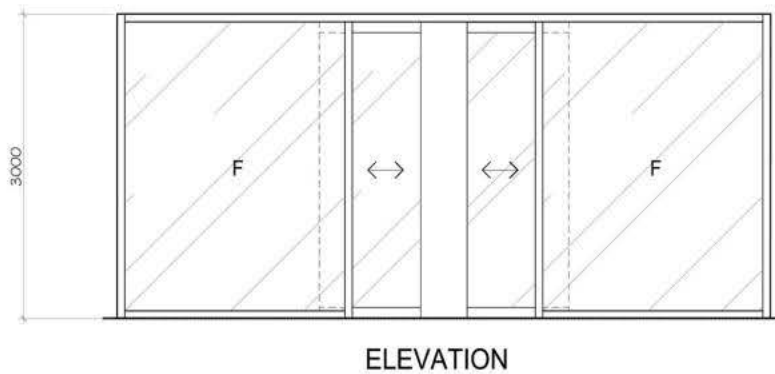
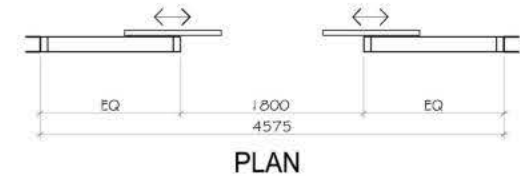
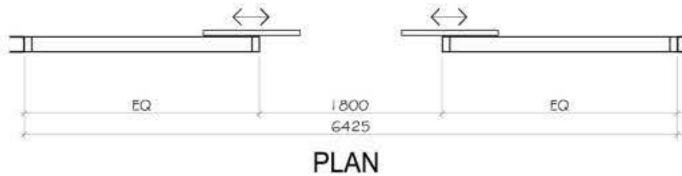
Note: Revised BOQ (attachment to Bid Bulletin No. 2)



NAST DOST PHASE 1 - REFLECTED CEILING PLAN

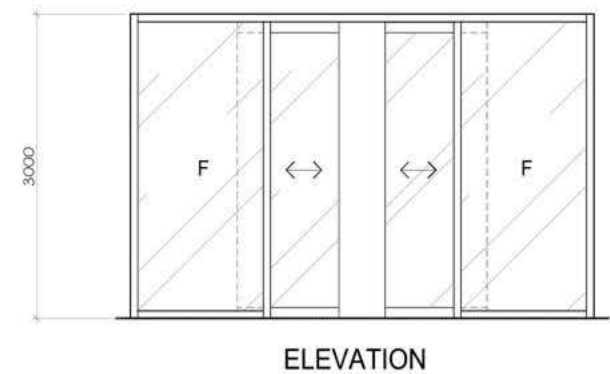
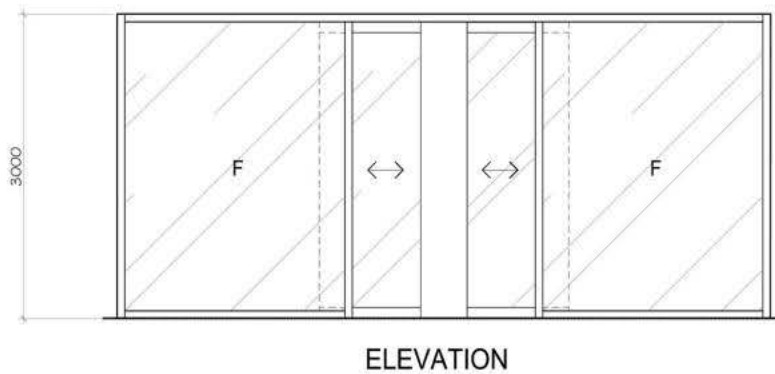
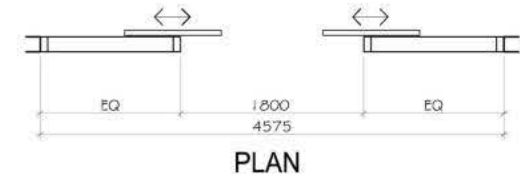
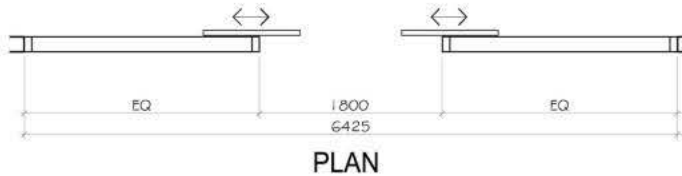
DOST TAGUIG CITY

PREPARED BY: AR. GARCIA
NOVEMBER 27, 2018



DOOR NO. : **D - 02**
 TYPE : AUTOMATIC SLIDING DOOR (MANUSA BRAND)
 WITH FIXED GLASS WINDOW
 DESCRIPTION : DOOR - 12mm THK. TEMP. CLEAR GLASS
 WINDOW - FIXED 12mm THK. TEMP. CLEAR
 GLASS SEAMLESS
 JAMB/FRAME : ALUM. BLACK POWDER COATED FINISH
 QUANTITY : 2 SETS
 LOCATION : VESTIBULE 1 & 2
 HARDWARE : BY SUPPLIER

DOOR NO. : **D - 03**
 TYPE : AUTOMATIC SLIDING DOOR (MANUSA BRAND)
 WITH FIXED GLASS WINDOW
 DESCRIPTION : DOOR - 12mm THK. TEMP. CLEAR GLASS
 WINDOW - FIXED 12mm THK. TEMP. CLEAR
 GLASS SEAMLESS
 JAMB/FRAME : ALUM. BLACK POWDER COATED FINISH
 QUANTITY : 2 SETS
 LOCATION : VESTIBULE 1 & 2
 HARDWARE : BY SUPPLIER



DOOR NO. : **D - 02**
TYPE : AUTOMATIC SLIDING DOOR (MANUSA BRAND)
WITH FIXED GLASS WINDOW
DESCRIPTION : DOOR - 12mm THK. TEMP. CLEAR GLASS
WINDOW - FIXED 12mm THK. TEMP. CLEAR
GLASS SEAMLESS
JAMB/FRAME : ALUM. BLACK POWDER COATED FINISH
QUANTITY : 2 SETS
LOCATION : VESTIBULE 1 & 2
HARDWARE : BY SUPPLIER

DOOR NO. : **D - 03**
TYPE : AUTOMATIC SLIDING DOOR (MANUSA BRAND)
WITH FIXED GLASS WINDOW
DESCRIPTION : DOOR - 12mm THK. TEMP. CLEAR GLASS
WINDOW - FIXED 12mm THK. TEMP. CLEAR
GLASS SEAMLESS
JAMB/FRAME : ALUM. BLACK POWDER COATED FINISH
QUANTITY : 2 SETS
LOCATION : VESTIBULE 1 & 2
HARDWARE : BY SUPPLIER